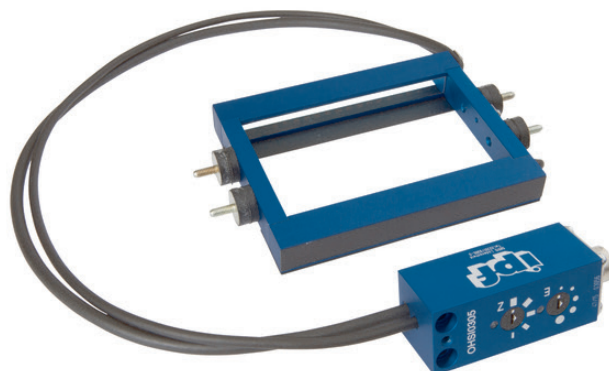


## OHSI0305

### OPTICAL SENSORS • FRAME LIGHT BARRIERS

sensor optical, frame 60x98, 114x15x90mm, Dynamic, resolution 0.3mm, 12-32V DC, PMP/PNP NC/NO, M16-connector 5pin, IP67, Aluminum



#### MECHANICAL FEATURES

Active zone height	98 mm
Active zone width	60 mm
Ambient temperature	-20 °C ... 60 °C
Degree of protection (IP)	IP67
Design	Cuboid
Frame opening, crosswise	40 mm
Frame opening, lengthwise	98 mm
Housing material	Aluminum
Reflector included in the scope of delivery	-
Sensor height	114 mm
Sensor length	15 mm
Sensor width	90 mm
With mechanical impact protection	+

#### ELECTRICAL FEATURES

Analog output 0 mA ... 20 mA	-
Analog output 0 V ... 10 V	-
Analog output -10 V ... +10 V	-
Analog output 4 mA ... 20 mA	-
Equipment protection class	Protection class 3
Max. switching distance	60 mm
Number of pins	5
Operating voltage	12 V ... 32 V
Rated control supply voltage $U_s$ at DC	12 V ... 32 V
Rated switching current	200 mA
Reverse polarity protection	+
Short-circuit protection	+
Suitable for safety functions	-
Switching frequency	1000 Hz
Type of electrical connection	M16-connector
Type of switching function	Normally closed contact/normally open contact
Type of switching output	PMP/PNP
Voltage type	DC

## ELECTRICAL FEATURES

With communication interface, analog	-
With communication interface, AS-Interface	-
With communication interface, CANOpen	-
With communication interface, DeviceNet	-
With communication interface, Ethernet	-
With communication interface, INTERBUS	-
With communication interface, PROFIBUS	-
With communication interface, RS-232	-
With communication interface, RS-422	-
With communication interface, RS-485	-
With communication interface, SSD	-
With communication interface, SSI	-
With LED display	+
With monitoring function of downstream devices	-
With other analog output	-
With time function	-

## OPTICAL FEATURES

Light source	Infrared light
Min. object size	0.3 mm
Resolution, dynamic	0.3

## OTHER FEATURES

Version	Dynamic
---------	---------

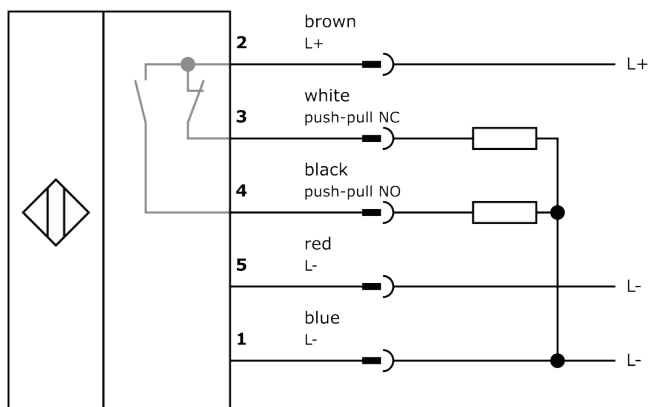
### Other

Packaging dimensions	138.0mm x 95.0mm x 210mm
Shipping weight	0.41kg
Tariff code	85365019

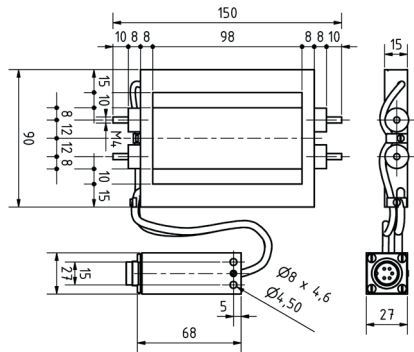
### Classification

ipf product group	705
eClass 8.0	27270911
eClass 9.0	27270911
eClass 9.1	27270911
ETIM-5.0	EC002721
ETIM-6.0	EC002721
ETIM-7.0	EC002721

## Connection



### Dimensional drawing



### Installation



Mounting / installation may only be carried out by a qualified electrician!

### Disposal



### Safety warnings

Before initial operation, please make sure to follow all safety instructions that may be provided in the product information.

Never use these devices in applications where the safety of a person depends on their functionality.

LED lighting systems can generate intensive UV radiation, which can damage your eyes in case of improper use. The manufacturer cannot be held responsible for damages that result from improper use or connection.