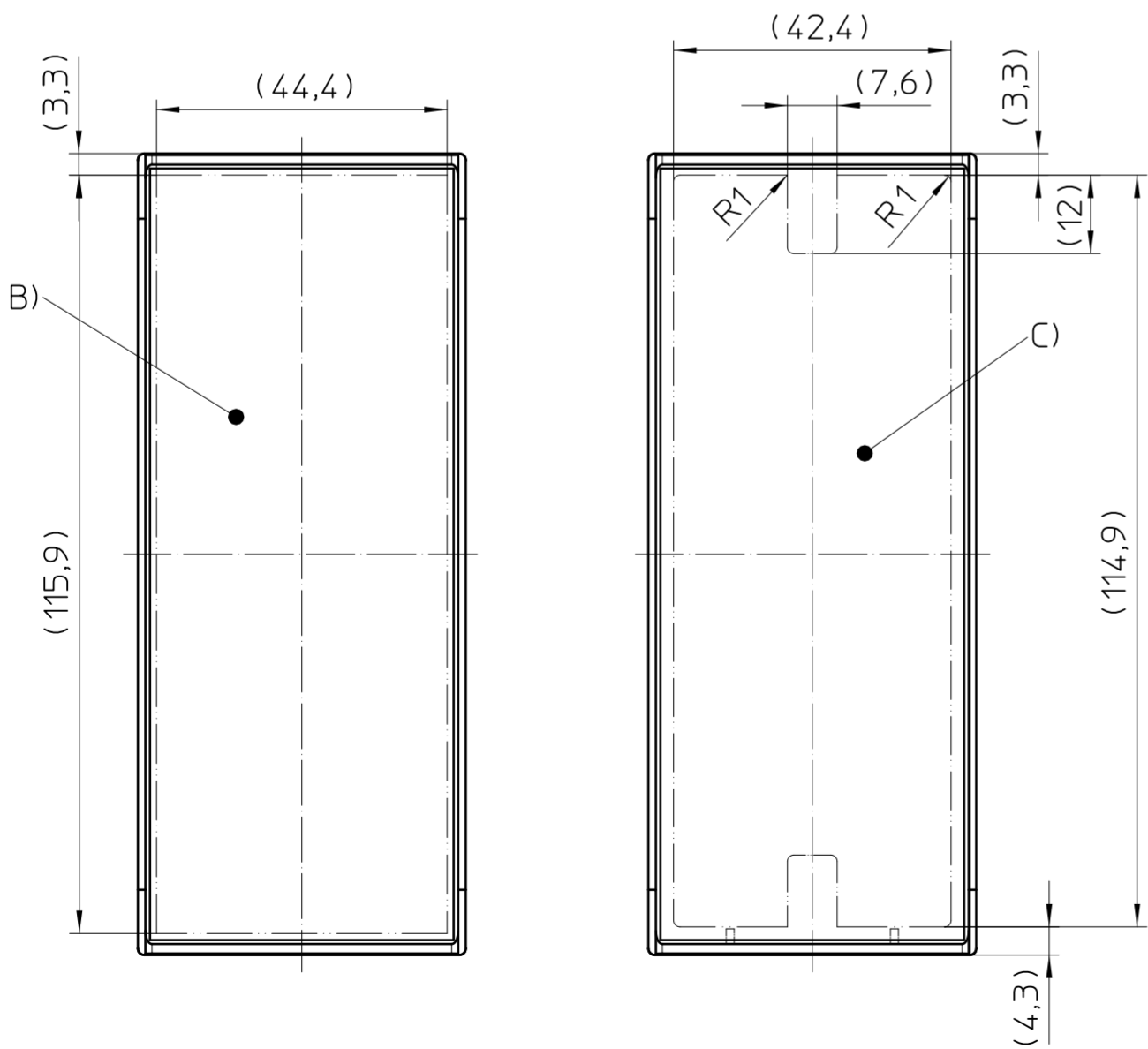
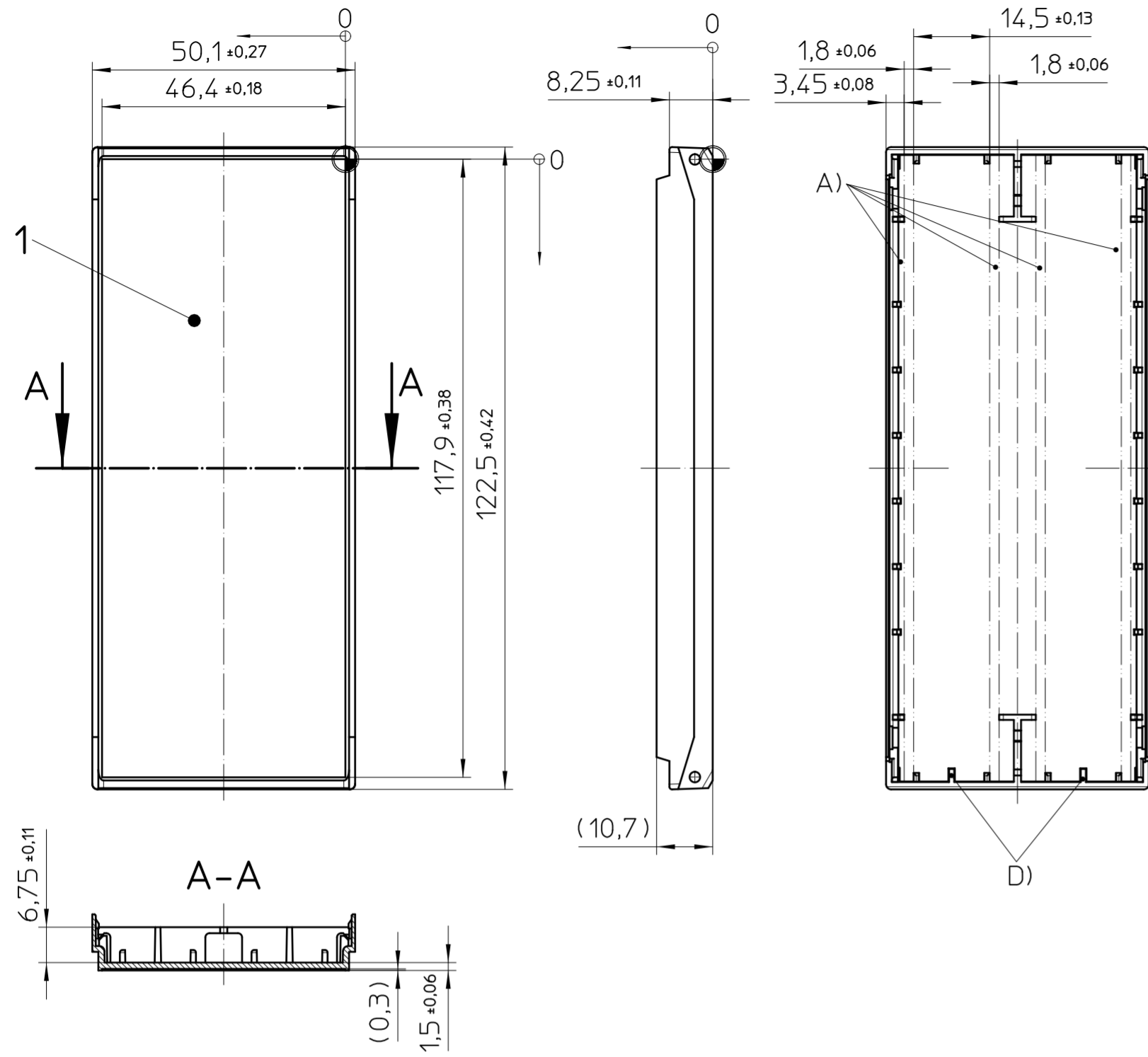


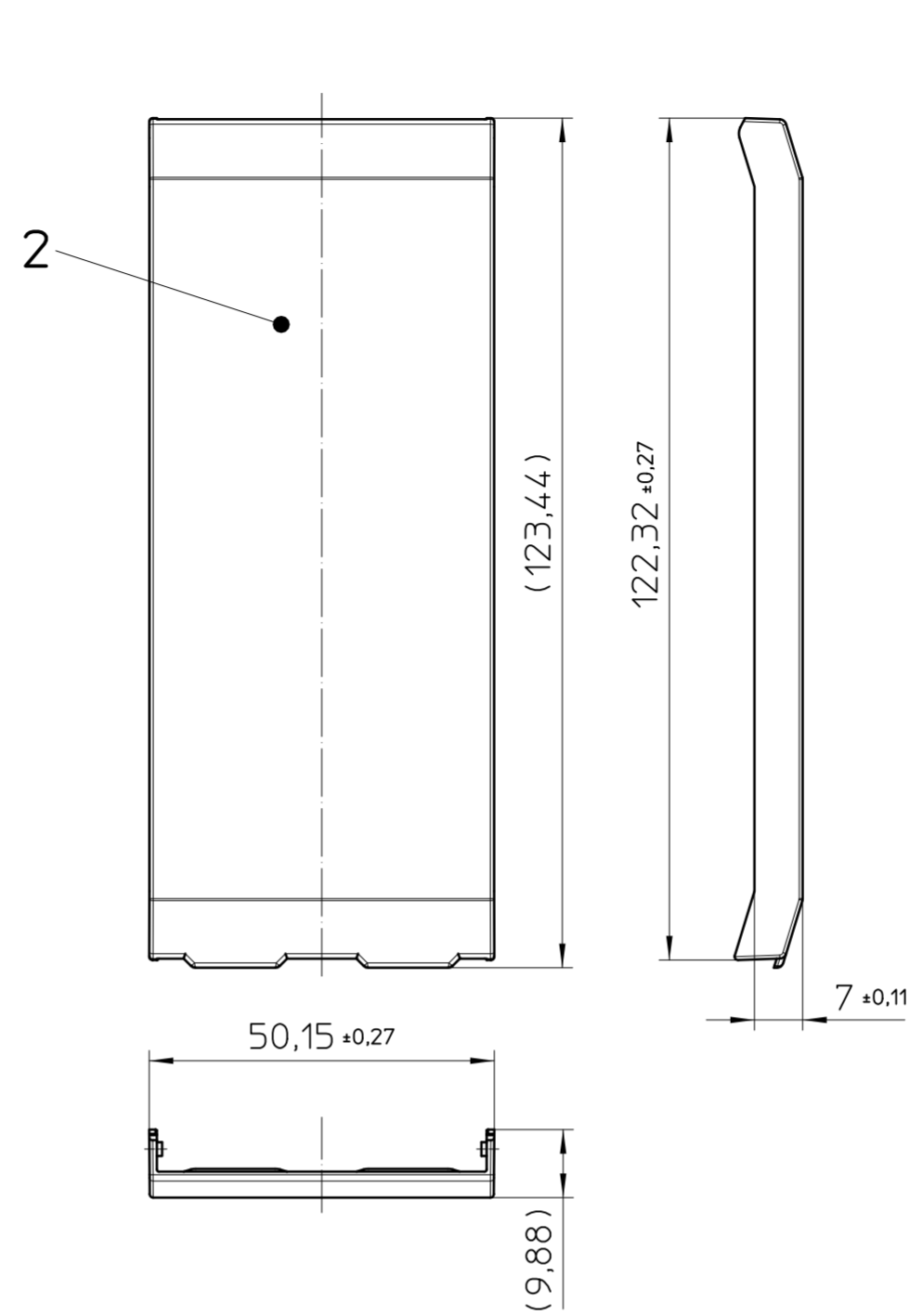
Transfer or duplication of this document as well as the utilisation or communication of its content are not permitted unless express consent is granted. Violations give rise to claims for damages. All rights reserved in case of patent, utility model or design patent registrations.

Weitergabe sowie Vervielfältigung dieses Dokuments, Verwertung und Mitteilung seines Inhalts sind verboten, soweit nicht ausdrücklich gestattet. Zuwiderhandlungen verpflichten zu Schadensersatz. Alle Rechte für den Fall der Patent-, Gebrauchsmuster- oder Designeintragung vorbehalten.

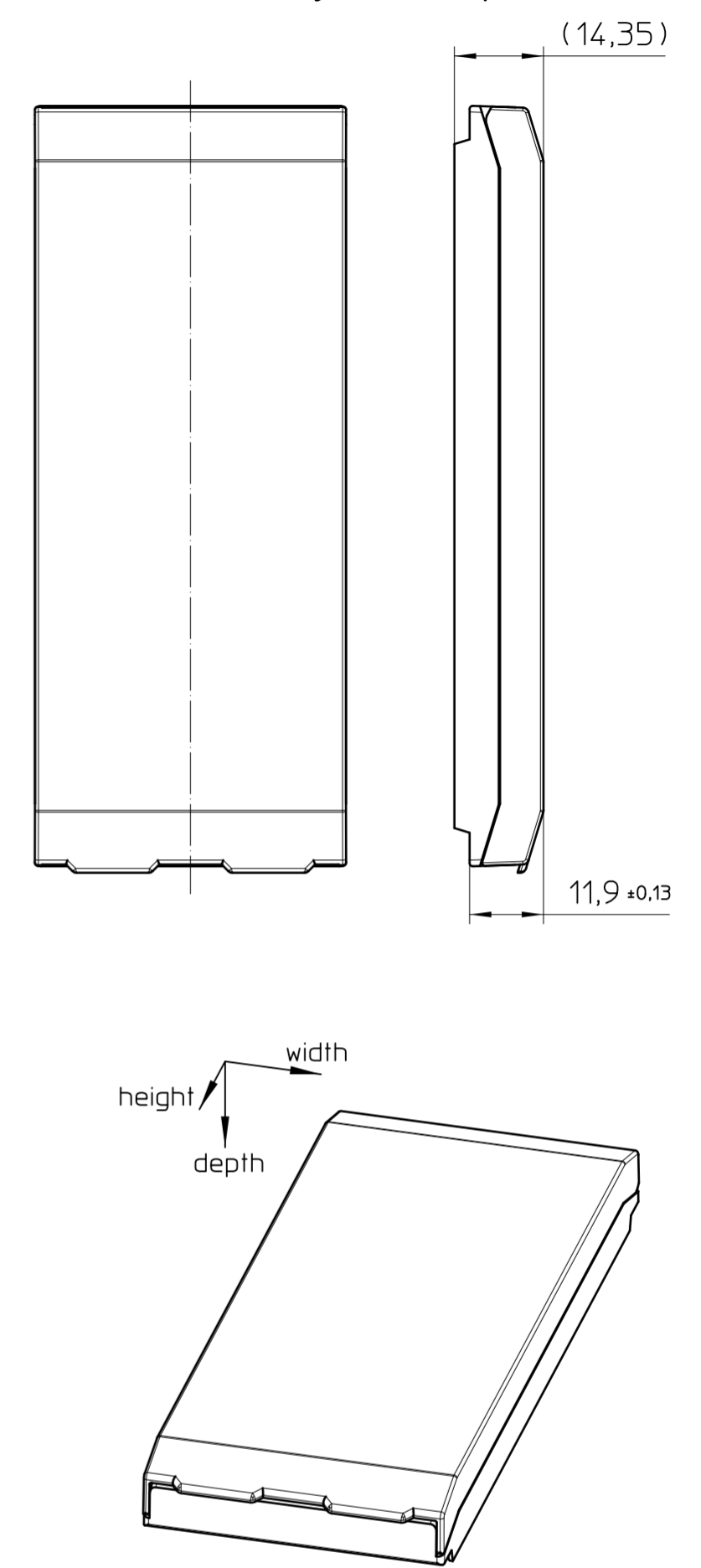
TOP



HINGED LID



Assembly example



General Information:

- Simplified representation
- Document excluded from change process
- Units are in millimeters [mm] and degrees [°]
- Tolerances apply in a normal climate according to DIN EN ISO 291-23/50-2, PA plastic parts with about 2% (% by weight) moisture content.
- Workpiece zero point for marking and machining processing
- Tolerances for machining processing, milling contour to zero point ±0,2, milling to milling contour ±0,1
- Machining radii min. R1, further on request
- Tolerances for printing DIN ISO 2768-m
- Web: www.phoenixcontact.com webcode: #1635

Additional Information:

- A) PCB $t = 1,6 \pm 0,2$
- B) Max. marking area, 0,3 recessed, only for pad printing, other printing processes on request.
- C) Max. machining area, 0,3 recessed.
- D) Coding

KIT (not mounted)			
Pos.	QTY	Description	Material
1	1	TOP	PA
2	1	HINGED LID	PC
DIN A2		document-No. / RI 01205264 / 01	date 30.08.2024
PHOENIX CONTACT		ident.-No. 1076870	document-type TECDOC 2D_Productdrawing
page 1	of 1	description ICS50-TL122X12-9005	
		scale 1:1	