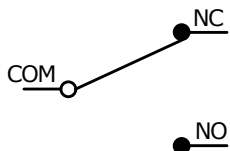


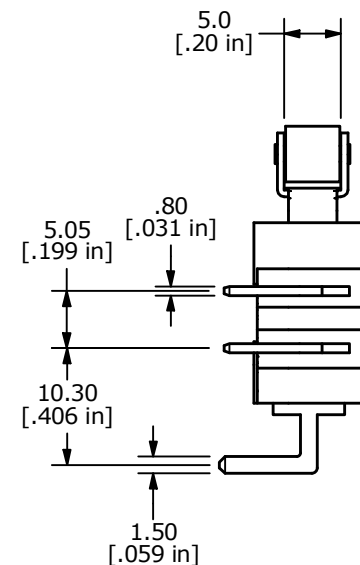
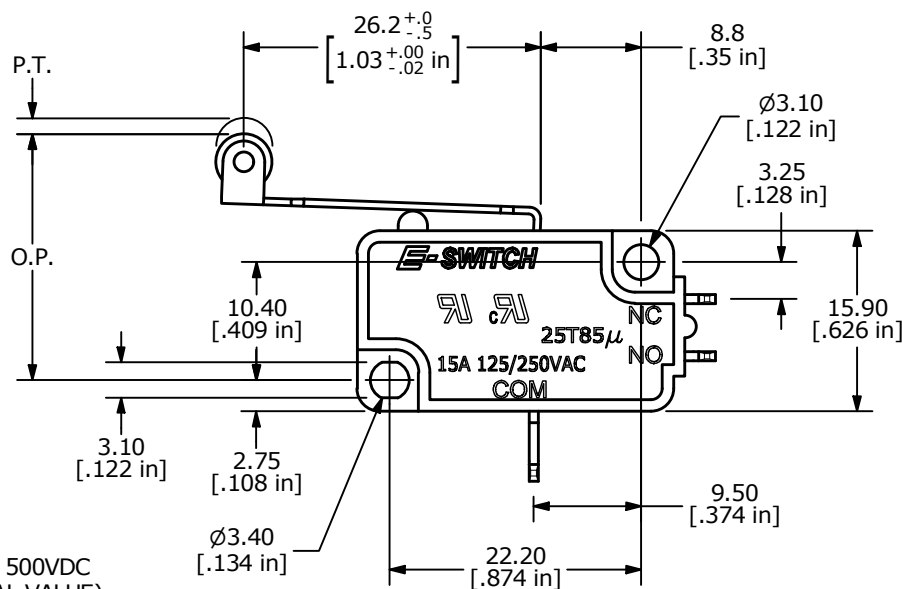
O.P. (MM)	P.T. (MM)
20.7 ± 1.5	2.5

O.P. = OPERATING POINT
P.T. = PRE-TRAVEL



NOTES:

- ALL DIMENSIONS IN MM [INCH]
- GENERAL TOLERANCE: X.X = ± 0.4
X.XX = ± 0.25
- RATING: 15A @ 125/250 VAC-UL, CUL
- OPERATING FORCE: 120 ± 40 gf
- OPERATING TEMP: -25°C to 85°C
- ELECTRICAL LIFE: 50,000 CYCLES MIN.
- MECHANICAL LIFE: 1,000,000 CYCLES TYP.
- INSULATION RESISTANCE: 100 MEGA-OHMS MIN @ 500VDC
- DIELECTRIC STRENGTH: 1500VAC 1 MINUTE (INITIAL VALUE)
- CONTACT RESISTANCE: 100 MILLI -OHMS MAX.
- ▲ DENOTES CRITICAL PARAMETER



REV	ECO NO	DESCRIPTION	DATE	BY
B	ECO-100848	REMOVE VDE RATING AND LOGO	05/09/22	JS



OBJECT ID
000021106

TITLE LS0851506F120V2A		SCALE 3:2	DATE 8/24/2018	DR MW	DWG Q950122	REV B
---------------------------	--	--------------	-------------------	----------	----------------	----------