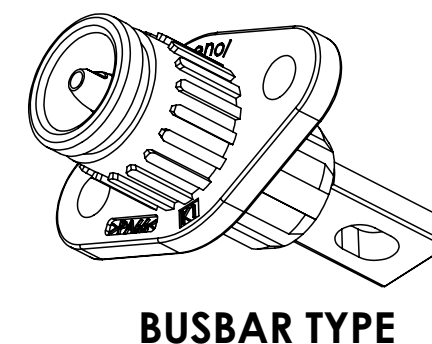
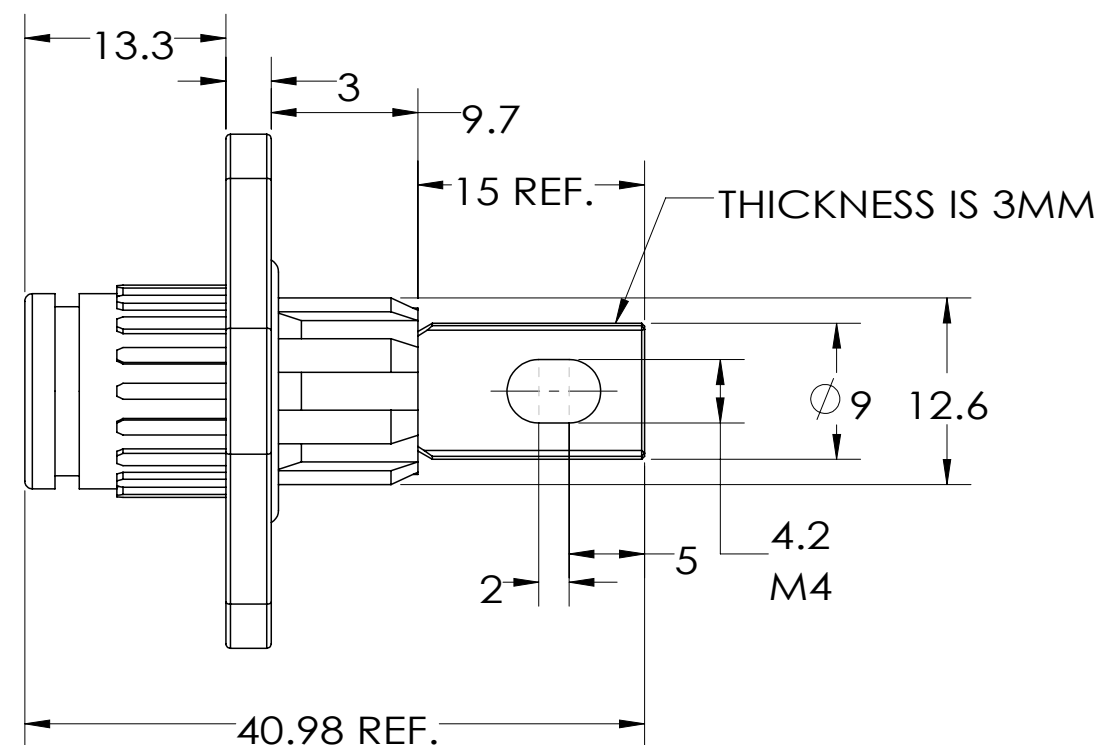
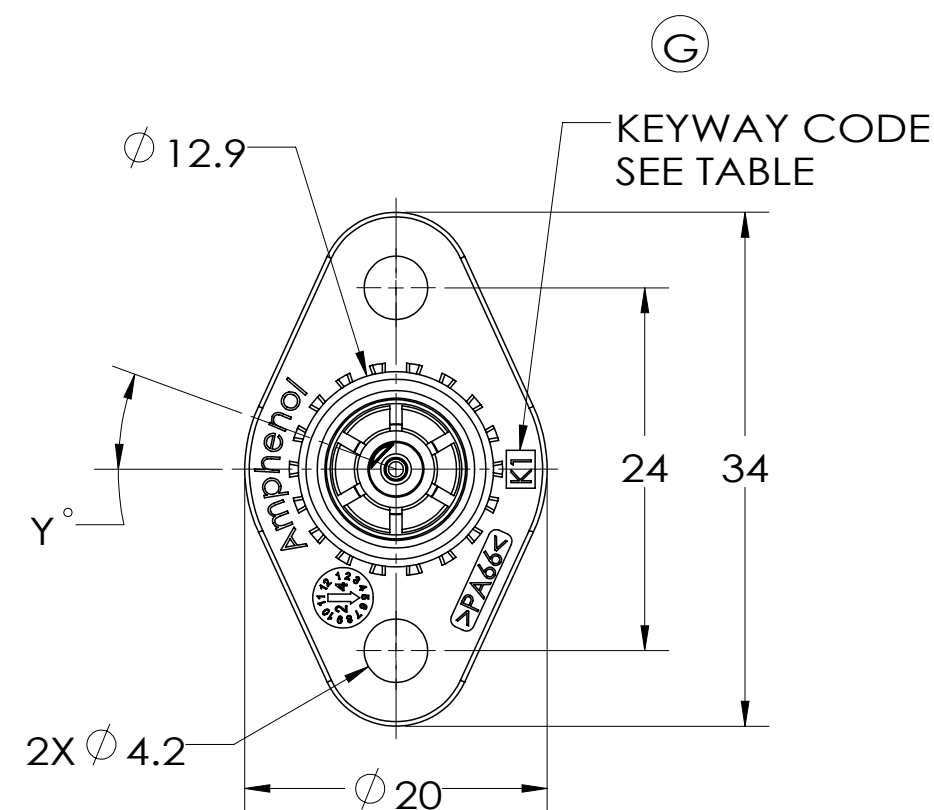


# CUSTOMER DRAWING

REVISION		
REV.	DESCRIPTION	DATE
F	ADD THE CRIMPING TYPE	2021-06-30
G	UPDATE KEYWAY LOCATION	2024/7/2

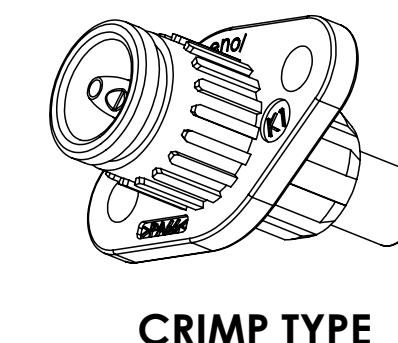
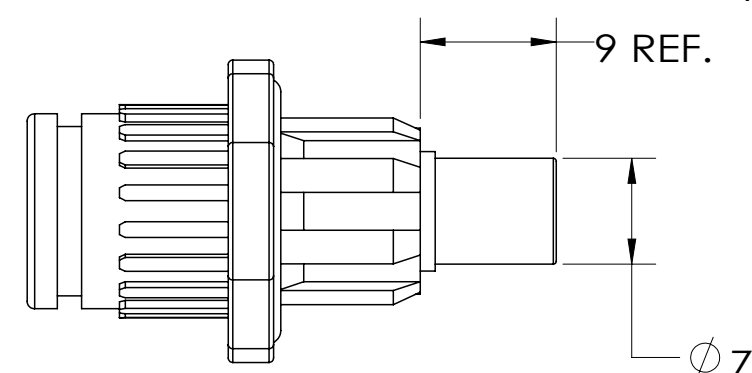
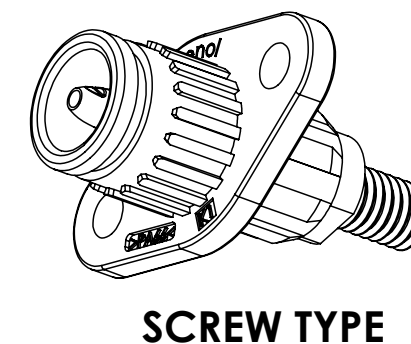
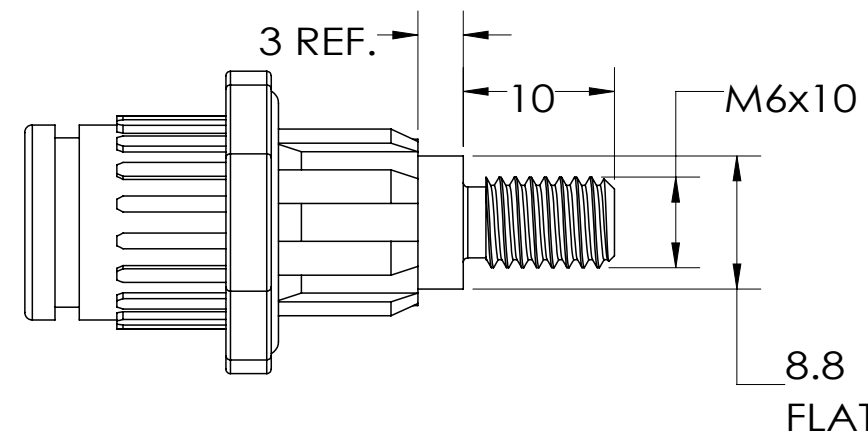
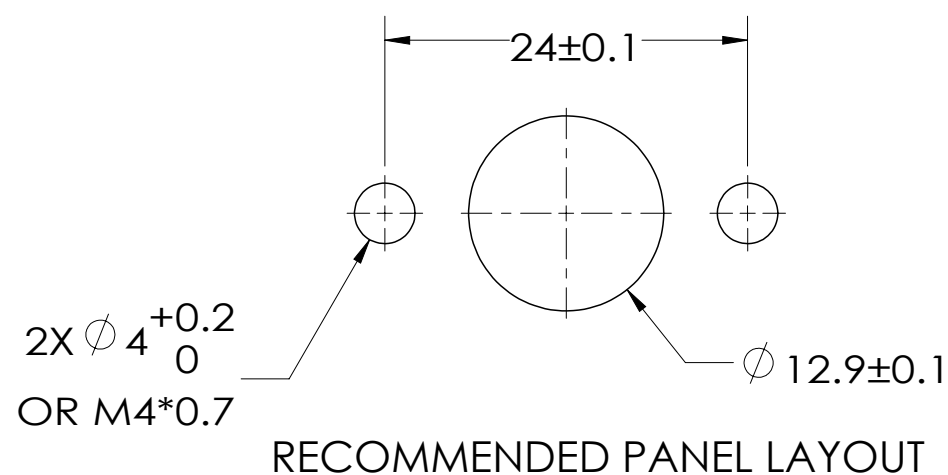


MFG NUMBER: C10-754727-( ) ( ) ( ) ( )

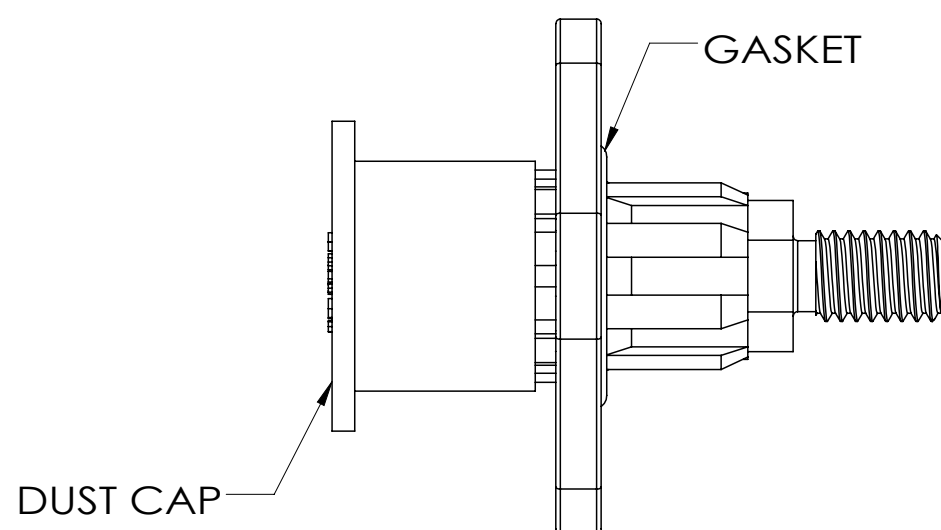
COLOR  
PIN TYPE  
SEALING  
KEYWAY

CODE NUMBER: SLPHIRM ( ) P ( ) ( ) ( )

PIN TYPE  
SEALING  
COLOR  
KEYWAY



ITEM	OPTION	CODE NUMBER	MFG NUMBER
COLOR	ORANGE	O	0
	BLACK	B	1
	RED	R	2
PIN TYPE	BUSBAR	B	1
	SCREW	T	2
	6 SQMM CRIMPING	06C	3
SEALING	10 SQMM CRIMPING	10C	0
	IP67(MATED)	S	0
KEYWAY (Y°)	NO SEALING	N	1
	20°	1	1
	30°	2	2



DUST CAP ASSEMBLY DIAGRAM

## SPECIFICATIONS

CURRENT RATING	70 Amps MAX.
OPERATING VOLTAGE	1500V DC
OPERATING TEMPERATURE	-40°C~125°C
AMBIENT TEMPERATURE	-40°C~80°C
CONTACT RESISTANCE	0.5mΩ MAX.
PROTECTION CLASS	IP67(MATED)

KEYWAY	KEYWAY CODE
20°	K1
30°	K2

DIAMETER "A"	WIRE SIZE
6.5	6 SQMM
7.0	10 SQmm

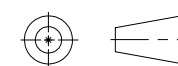
1. THE REFERENCED PRODUCT SHALL BE COMPLIANT TO RoHS DIRECTIVE.
2. IF CHOOSE NO SEALING TYPE, THERE WILL BE NO GASKET.
3. DUST CAP SHOULD BE REMOVED BEFORE THE PLUG MATING IN.

### NOTES

THIS DOCUMENT CONTAINS PROPRIETARY INFORMATION AND SUCH INFORMATION MAY NOT BE DISCLOSED TO OTHERS FOR ANY PURPOSE OR USED FOR MANUFACTURING PURPOSES WITHOUT WRITTEN PERMISSION FROM THE AMPHENOL CORP.

Next Assembly

UNLESS OTHERWISE SPECIFIED	
LINEAR DIMENSIONS ARE IN MILLIMETERS	
TOLERANCES:	
DIM. RANGE	0-3 >3-6 >6-30 >30-120 >120-400
TOLERANCE	$\pm 0.1$ $\pm 0.1$ $\pm 0.2$ $\pm 0.3$ $\pm 0.5$
ANGLES = $\pm 2^\circ$	
DIM. & TOL. PER ASME Y14.5M-1994;	
DRM PER MIL-DTL-31000;	
OTHER AMPHENOL STANDARDS: 9-9318	
THIRD ANGLE PROJECTION	



APPROVALS		DATE
PREPARED BY:	Hollis Zhang	2019-11-19
LEAD/PRODUCT ENGINEER:	Seven Xie	
ENGINEERING MANAGER:	Rob Weng	
PRODUCT GROUP:	C&I	
AIPG DIVISION:	AIO	
MATERIAL SPEC	PROCESS SPEC	
N/A	N/A	

AMPHENOL CORPORATION			
Amphenol Technology (Zhuhai) Co. Ltd. No. 63 Xinghan Road, Sanzao Town, Jinwan, Zhuhai, PRC			
3.6MM SURLOK PLUS RECEPTACLE			
SIZE	CAGE CODE	DOCUMENT NUMBER	REV
C	90MJ5	10-754727-( )	G
SCALE: 2:1		REF: N/A	SHEET 1 OF 1