

dimensions in millimetres

LED RECESSED PROFILE

GLG2

The most important features:

- excellent heat dissipation
- designed and manufactured in Poland
- cover made of polycarbonate – UV & heat resistant

Application:

- home and shop furniture assembly
- stairs assembly
- wall and ceiling lighting decorations



Specifications

Available colours	silver, white, black
Material	anodized aluminium
Application	recessed tiles
LED strip width	up to 12 mm
Basic length	1000 mm
Additional lengths	2020 mm, 3000 mm, 4150 mm

LED Recessed Profile GLG2 - SET

Product code	Product description
FIX-GLG2-xx-1M	LED Surface Profile SU2
FIX-COV-ML-PVC-1000	LED profile Cover PCV milky
FIX-GLG2-xx-EC-O	Cover end cap (with wire hole) x2 pcs

*xx - AS - silver anododa, WL - white, BL - black

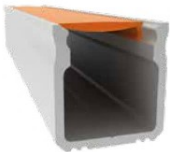
LED profile GLG2 cover



LED profile GLG2 accessories



Easy cover assembly



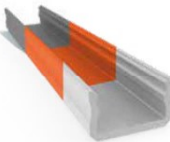
Thanks to the use of a semi-circular cover slot, the installation is trouble-free, and disassembly does not damage the cover

Easy cover assembly



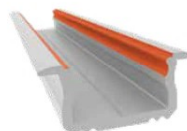
Thanks to the use of a semi-circular cover slot, the installation is trouble-free, and disassembly does not damage the cover

Paint



In addition to anodized profiles (silver, inox stainless steel, black), in the case of wholesale orders, it is possible to order powder coated profiles in any color from the RAL palette.

Even more light



The innovative method for cover assembly we have developed ensures maximum use of the space inside the profile. Thanks to this, we have minimized the diffraction phenomenon, leaving much more space for light.