

DIGITUS USB Type-C™ 3-Port Hub + Gigabit Ethernet

DA-70255

EAN 4016032430100



3 Port USB 3.0 Type-C Hub with Gigabit Ethernet 3xUSB A/F, 1xUSB C/M, 1xRJ45 LAN, Win/Mac OS

With the DIGITUS® USB Type-C™ 3.0 Hub & Gigabit LAN Adapter you can connect 3 additional USB 3.0 high speed devices to your Ultrabook™, notebook, subnotebook, Macbook, Macbook Air etc. Printers, hard drives, flash memory, card reader, speakers and many more devices can be easily connected via the USB interface. In addition, the adapter extends your computer to an gigabit Ethernet port and makes it networkable, because nowadays the most mobile devices can only be integrated into the network via wireless LAN.

Fast data transmission due to USB 3.0 and gigabit LAN

- Downward compatible to USB 2.0 and 1.1
- IEEE 802.3, IEEE 802.3u, IEEE 802.3ab compatible
- Supports both full-duplex with flow control and half-duplex with backpressure operation

- Supports twisted pair crossover detection and auto-correction (HP Auto-MDIX)
- Supports Wake-On-LAN
- Compatible with Mac OS, Windows 10, and Google Chrome OS
- Cable length: 20 cm
- Ports: 1x 10/100/1000 Mbps RJ-45 port, 3x USB 3.0 type A(F), 1x USB type C male cable
- Dimensions: 95 x 27,2 x 16mm
- Weight: 32g
- Number of ports: 3
- USB standard: USB 3.0 / 3.1
- USB-A (3.0) Connectors: 3
- USB-C Connectors: 0
- USB-C Products: yes

Package contents

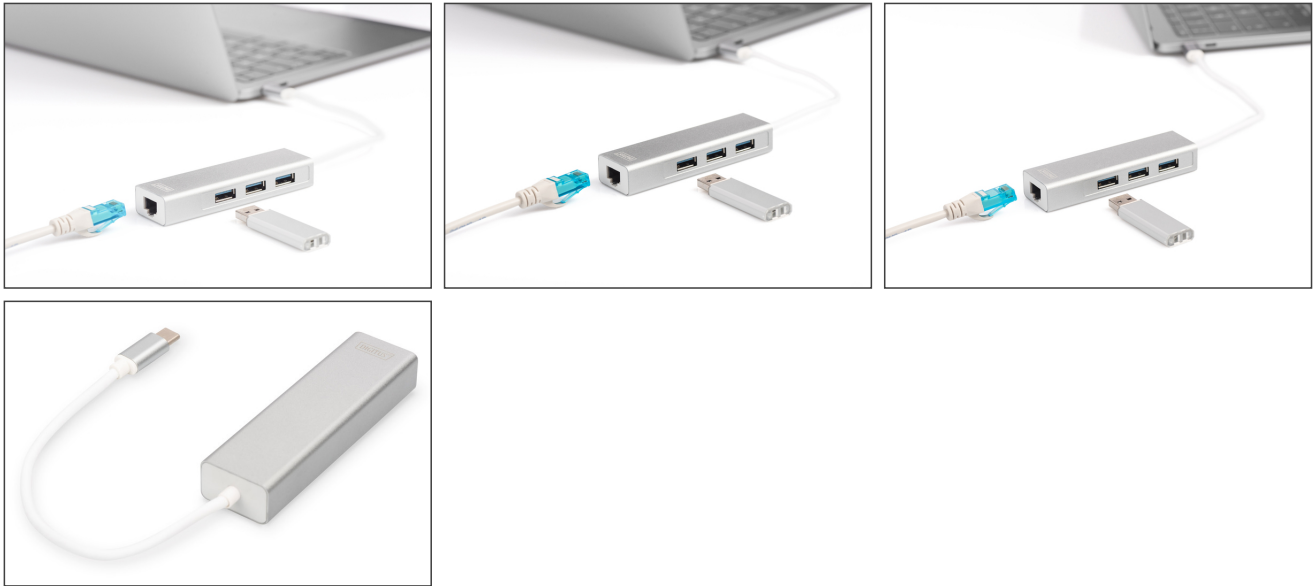
- USB Type-C™ 3-Port Hub + Gigabit Ethernet
- Instruction manual

Logistics

| | Number (pcs) | Weight (kg) | Depth (cm) | Width (cm) | Height (cm) | cm³ |
|------------------------------|--------------|-------------|------------|------------|-------------|-----------|
| Packaging Unit Carton | 100 | 9.70 | 46.00 | 35.00 | 35.00 | 56,350.00 |
| Packaging Unit Inside | 1 | 0.10 | 14.00 | 8.50 | 2.50 | 297.50 |
| Packaging Unit Single | 1 | 0.10 | 14.00 | 8.50 | 2.50 | 297.50 |
| Net single without Packaging | 1 | 0.06 | 14.00 | 8.50 | 2.50 | 297.50 |

More images:





Safety notes

- Overloading can lead to overheating and damage to the appliance or the connected peripherals.
- If necessary, use an external power supply to ensure stable performance.
- If devices such as external hard disks or printers that require a high power consumption are connected, the device should be used with an external power supply. Otherwise, the device could be overloaded or functional problems could occur.
- Do not expose the device to rain, moisture, vapors or liquids.
- Do not insert any objects into the device.
- Do not attempt to repair the unit or open the housing without authorization. You risk an electric shock!
- Ensure adequate ventilation to prevent damage due to overheating.
- Dust, moisture, vapors and strong cleaning agents or solvents can cause damage to the device.
- Disconnect the appliance from the power supply and the connected devices before cleaning.
- Clean the device with a dust-free cloth.

EU responsible person

EU based economic operator ensuring the product complies with the required regulations.

ASSMANN Electronic GmbH
 Auf dem Schöffel 3
 Lüdenscheid, Germany
<https://www.assmann.com>
info@assmann.com