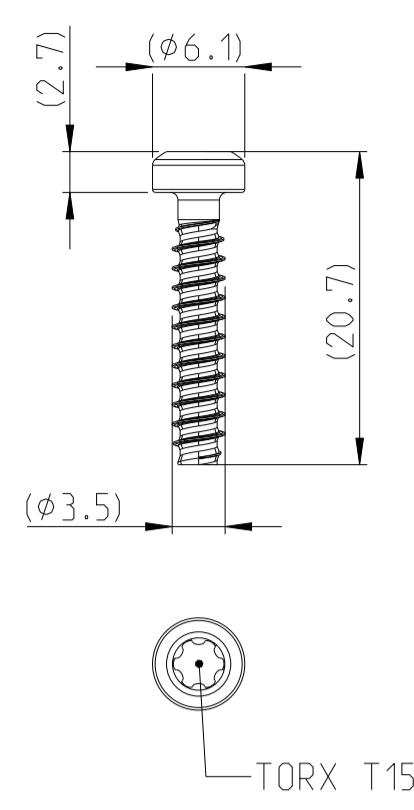
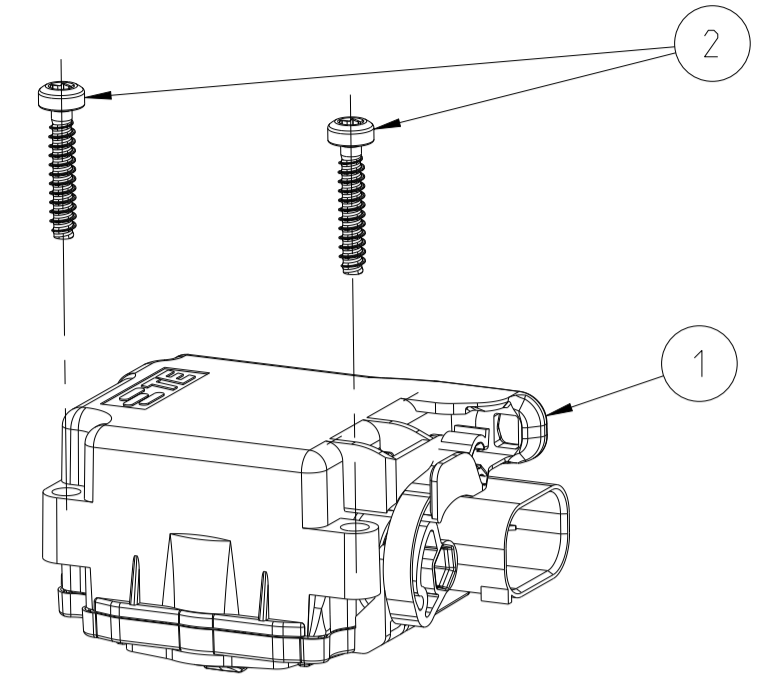


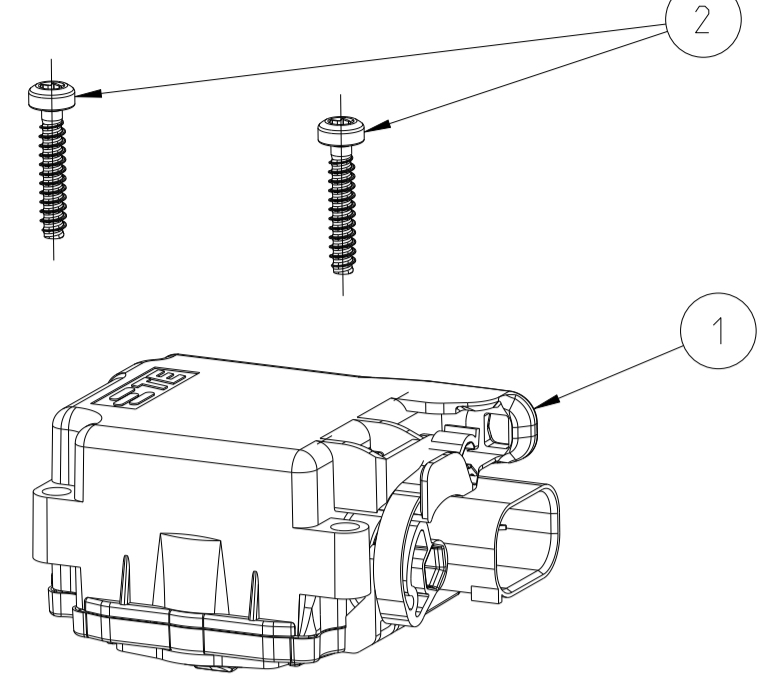
0-2236640-1



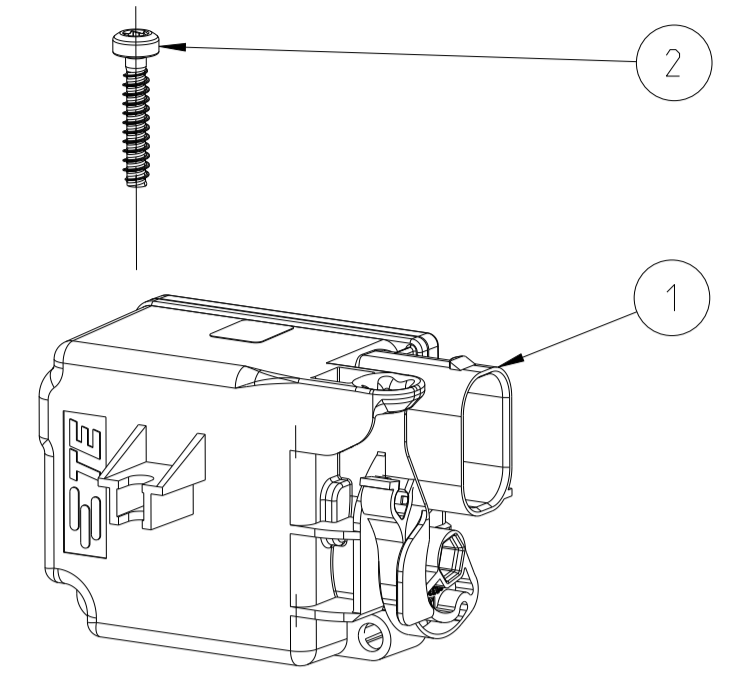
X-2392464-1 CONFIGURATION ACTUATOR TYPE1 AS SHOWN



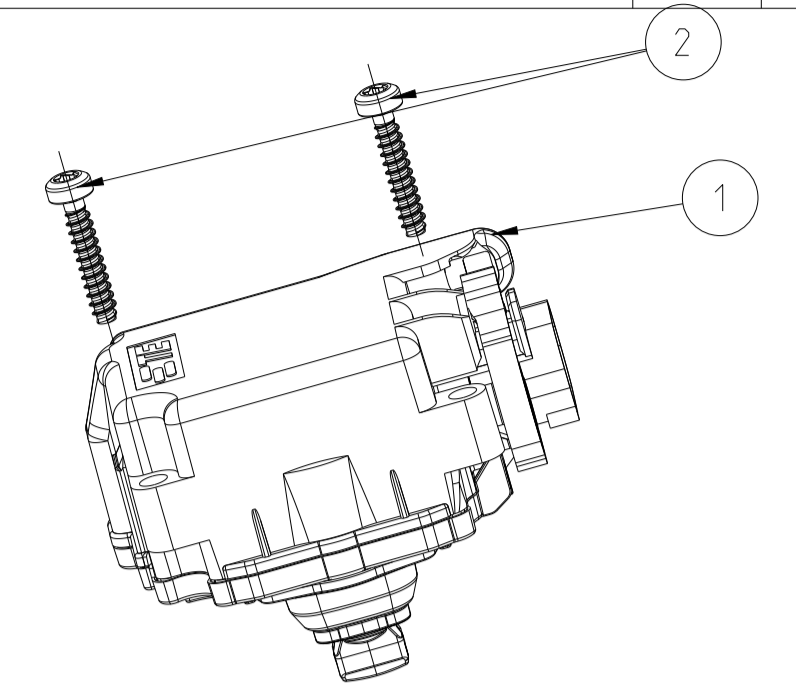
X-2392464-2 CONFIGURATION ACTUATOR TYPE2 AS SHOWN



X-2392464-3 CONFIGURATION ACTUATOR TYPE GB AS SHOWN



X-2392464-4 CONFIGURATION ACTUATOR TYPE NACS AS SHOWN

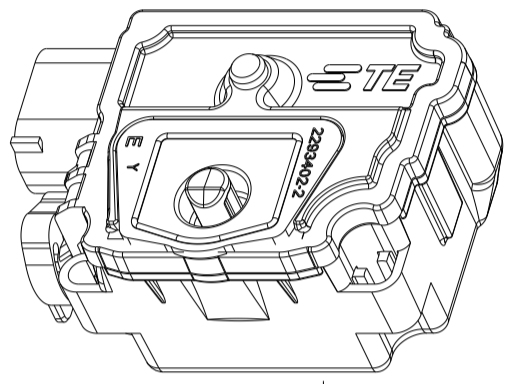


REVISIONS					
P	LTN	DESCRIPTION	DATE	DMN	APVD
B3		X-2392464-4 FOR TYPE NACS. TYPE GB ADDED	23AUG2024	PK	FW I
B4		DIM BASE POSITION FOR X-2392464-4 UPDATED	17FEB2025	GR	FW I
B5		SUPPORTING SURFACES ADDED FOR X-2392464-4	02SEP2025	DKC	FW I
C		PCBA change from LFB to MS	20JAN2026	MD	MH

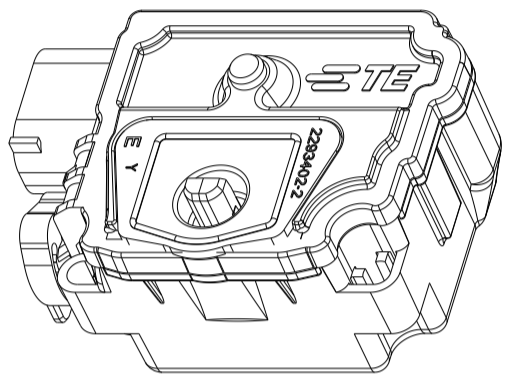
NOTES:

- 1 PACKAGING ACTUATORS IN TRAYS. SCREWS ON TOP OF TRAY.
- 2 DELIVERY CONDITION: ACTUATOR IN BASE POSITION. SERVICE UNLOCK AS SHOWN
- 3 MARKING OF OK PART ON DEFINED SURFACE. DMC INCLUDES:
 - SERIAL NUMBER: 6 DIGITS
 - ACTUATOR PN: 9 DIGITS (E.G.: 022934691)
 - REVISION: 1 DIGIT
 - DATE CODE: 6 DIGITS (DDMMYY)
 - TEST MODIFICATION/SOURCE: 1 DIGIT
- 4 FOR FURTHER INFORMATION SEE ACTUATOR PRODUCT SPECIFICATION 108-94519
- 5 SURFACE ACTUATOR PINS:
 - 1-/2-/3-2293469-X: 1µm TO 3µm TIN
 - 0-2293469-X: 0.8µm TO 2µm Au OVER Ni
- 6 ACTUATOR MOUNTING INTERFACE TO HSG SEE NEXT SHEET
- 7 THE STATUS OF THE ACTUATOR (PIN POSITION OF THE LOCKING PIN) IS DEFINED ON THE PRODUCT SPECIFICATION 108-94519. THE FEEDBACK SIGNAL CAN BE MONITORED BY MEASURING:
 - A) CURRENT I_{SENS} [mA] ON ACTUATOR VERSIONS 0- / 2-2293469-X, 0-2475877-4.
 - B) RESISTANCE R_{SENS} [kOhm] ON ACTUATOR VERSIONS 1- / 3- / 4-2293469-X, 3-2475877-4

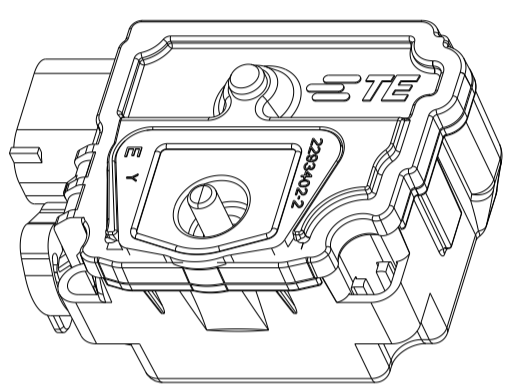
X-2293469-1 BASE POSITION AS SHOWN



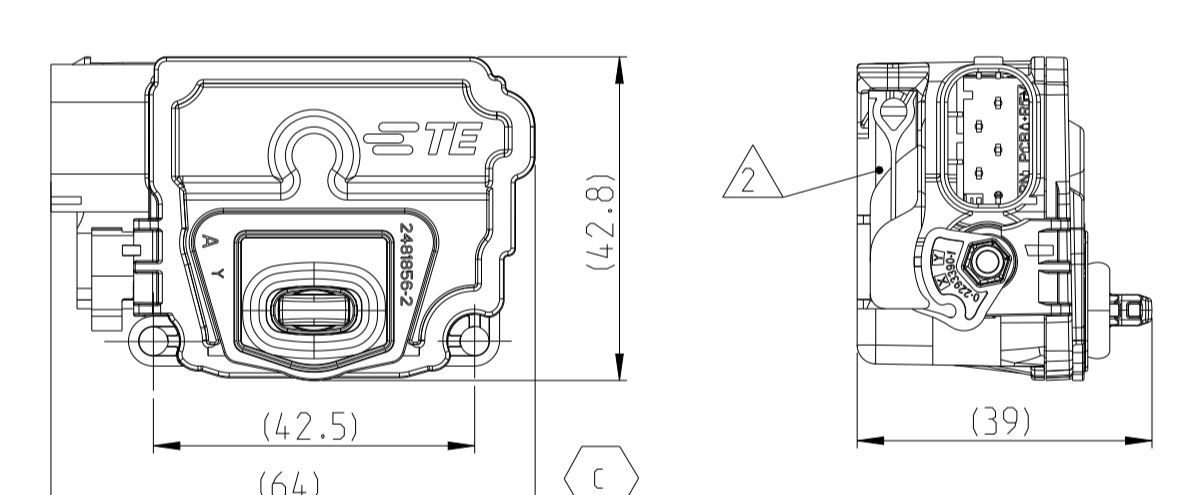
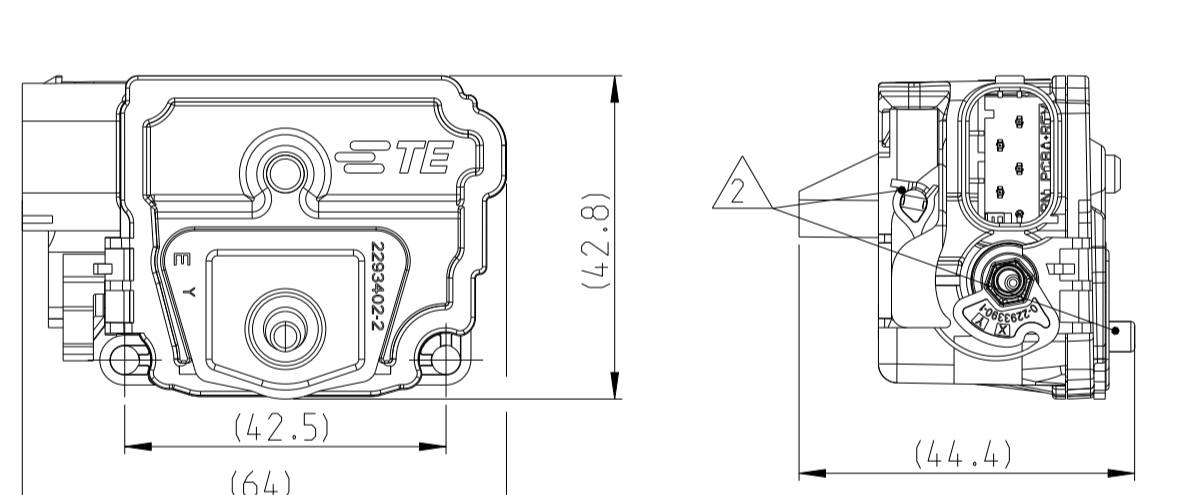
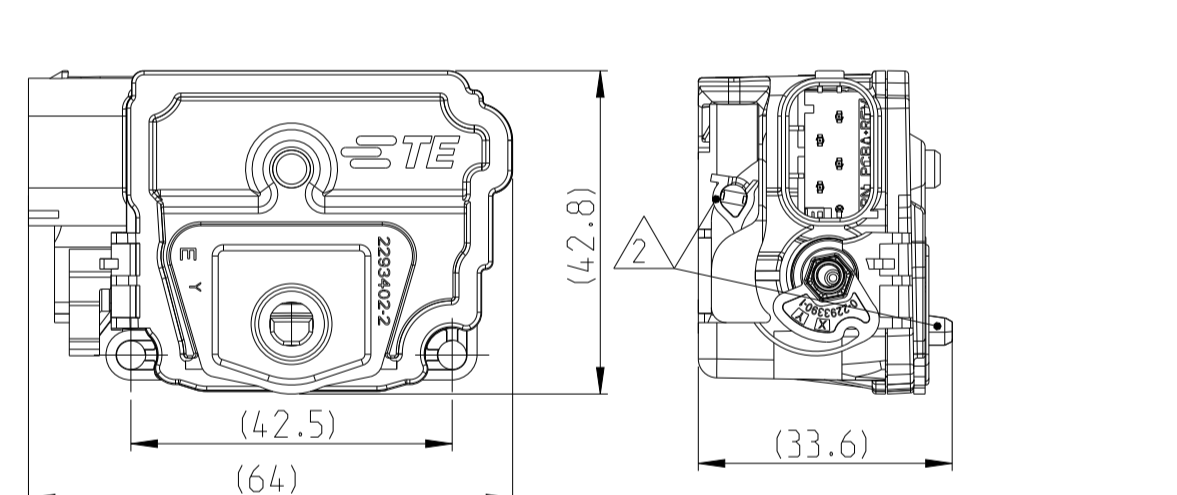
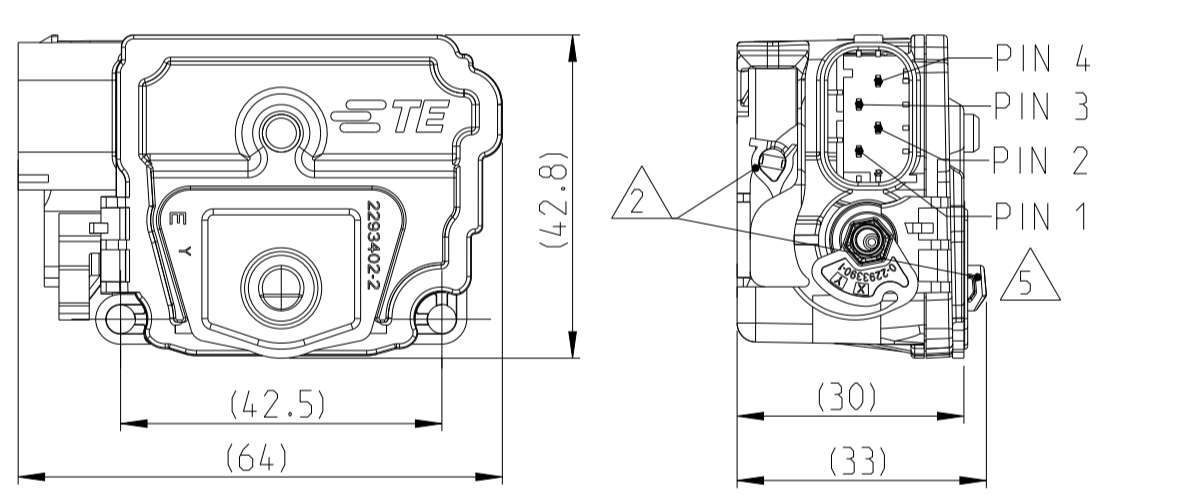
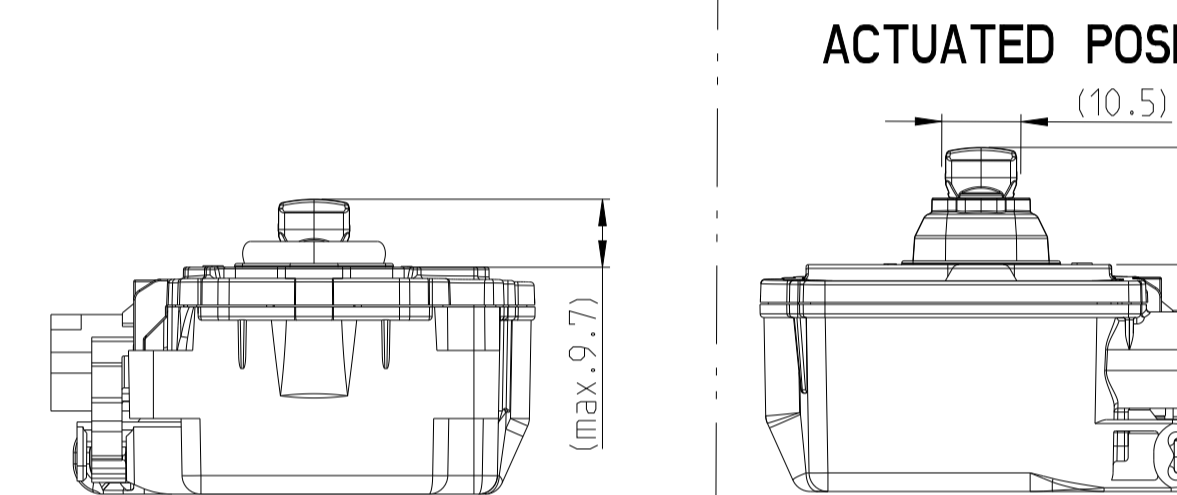
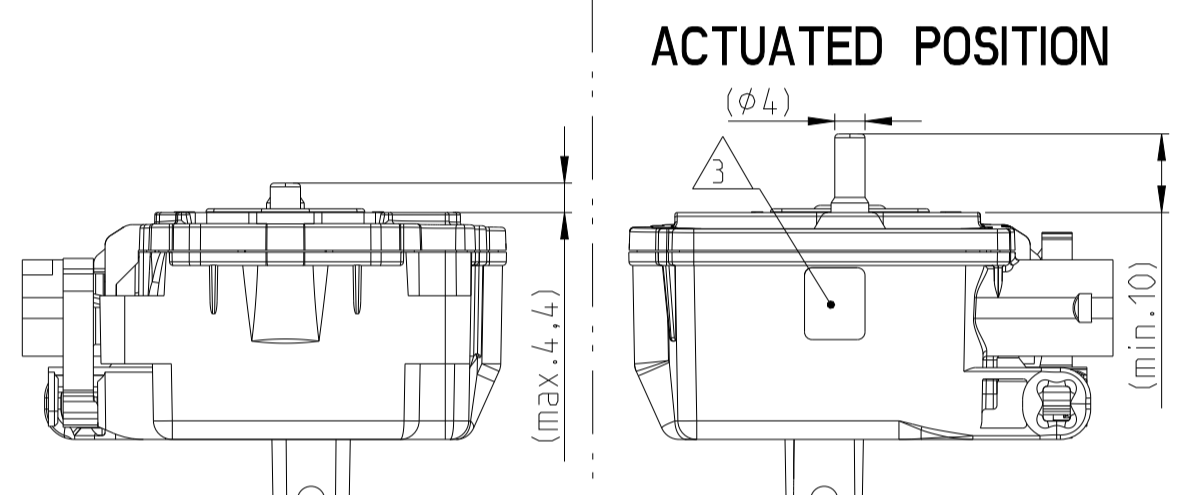
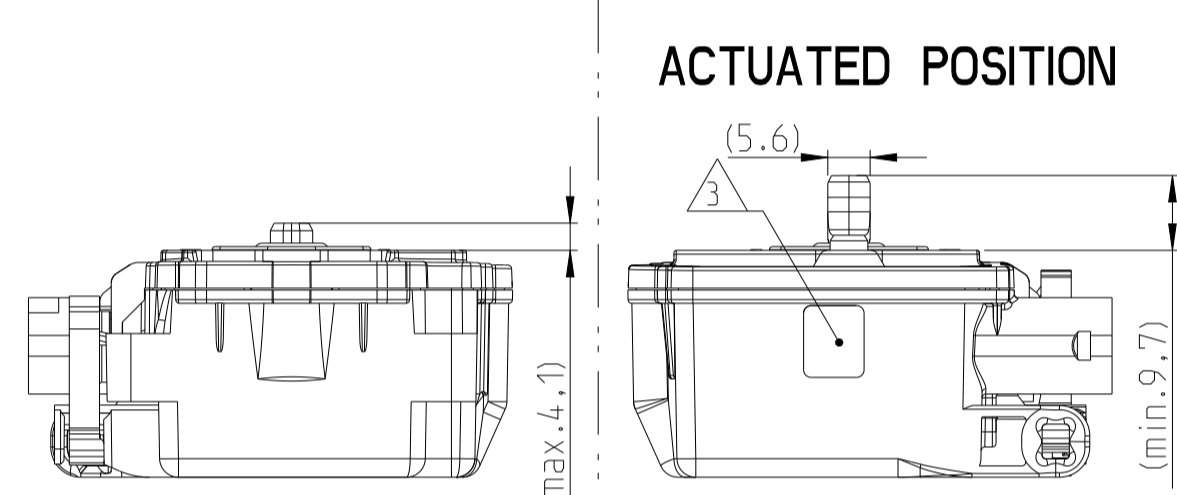
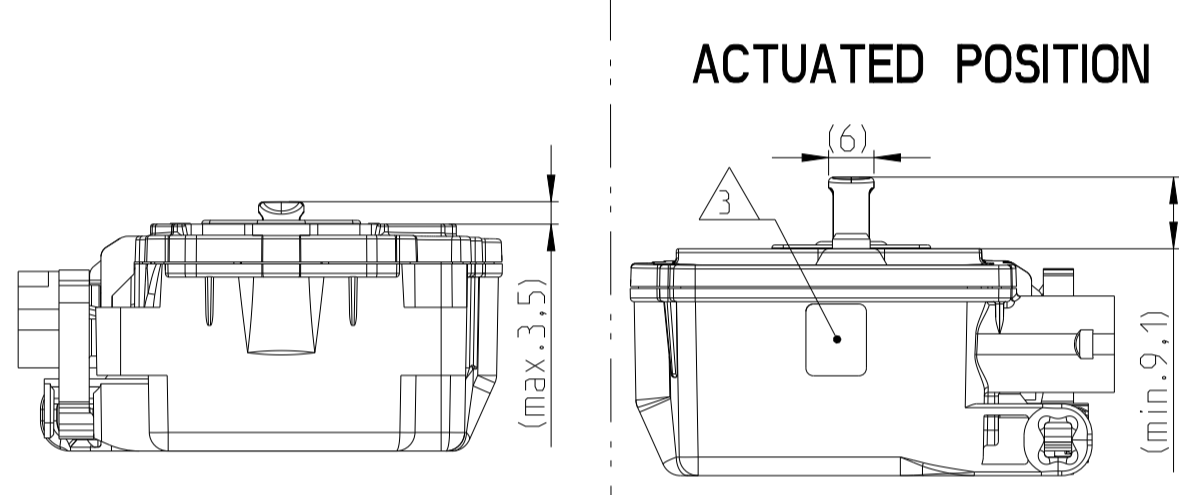
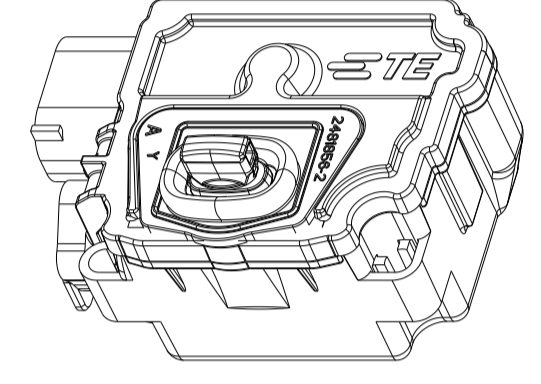
X-2293469-2 BASE POSITION AS SHOWN



X-2293469-3 BASE POSITION AS SHOWN



X-2475877-4 BASE POSITION AS SHOWN



		2	2	1	2	2	1	2	2	1	2	2	1	2	2	1	2	2	SCREW, 3.5x18	2236640-1	2
		1	-	-	-	-	-	-	-	-	-	-	-	-	-	-	-	-	ACTUATOR, CHARGE INLET NACS MS 4W, ASSY	3-2475877-4	
		-	1	-	-	-	-	-	-	-	-	-	-	-	-	-	-	-	ACTUATOR, CHARGE INLET NACS 4W, ASSY, LB	0-2475877-4	
		-	-	1	-	-	-	-	-	-	-	-	-	-	-	-	-	-	ACTUATOR, 24V, TYPE GB, 4W, MS	4-2293469-3	
		-	-	-	1	-	-	-	-	-	-	-	-	-	-	-	-	-	ACTUATOR, 24V, TYPE 2, 4W, MS	4-2293469-2	
		-	-	-	-	1	-	-	-	-	-	-	-	-	-	-	-	-	ACTUATOR, 24V, TYPE 1, 4W, MS	4-2293469-1	
		-	-	-	-	-	1	-	-	-	-	-	-	-	-	-	-	-	ACTUATOR, TYPE GB, 4W, MS	3-2293469-3	
		-	-	-	-	-	-	1	-	-	-	-	-	-	-	-	-	-	ACTUATOR, TYPE 2, 4W, MS	3-2293469-2	
		-	-	-	-	-	-	-	1	-	-	-	-	-	-	-	-	-	ACTUATOR, TYPE 1, 4W, MS	3-2293469-1	
		-	-	-	-	-	-	-	-	1	-	-	-	-	-	-	-	-	ACTUATOR, TYPE GB, 3W, MS	2-2293469-3	1
		-	-	-	-	-	-	-	-	-	1	-	-	-	-	-	-	-	ACTUATOR, TYPE 2, 3W, MS	2-2293469-2	
		-	-	-	-	-	-	-	-	-	-	1	-	-	-	-	-	-	ACTUATOR, TYPE 1, 3W, MS	2-2293469-1	
		-	-	-	-	-	-	-	-	-	-	-	1	-	-	-	-	-	ACTUATOR, TYPE GB, 3W, MS	1-2293469-3	
		-	-	-	-	-	-	-	-	-	-	-	-	1	-	-	-	-	ACTUATOR, TYPE 2, 3W, MS	1-2293469-2	
		-	-	-	-	-	-	-	-	-	-	-	-	-	1	-	-	-	ACTUATOR, TYPE 1, 3W, MS	1-2293469-1	
		-	-	-	-	-	-	-	-	-	-	-	-	-	-	1	-	-	ACTUATOR, TYPE GB, 4W, MS	0-2293469-3	
		-	-	-	-	-	-	-	-	-	-	-	-	-	-	-	1	-	ACTUATOR, TYPE 2, 4W, MS	0-2293469-2	
		-	-	-	-	-	-	-	-	-	-	-	-	-	-	-	-	1	ACTUATOR, TYPE 1, 4W, MS	0-2293469-1	

ASSY PN	3-2392464-4	0-2392464-4	4-2392464-3	4-2392464-2	4-2392464-1	3-2392464-3	3-2392464-2	3-2392464-1	2-2392464-3	2-2392464-2	2-2392464-1	1-2392464-3	1-2392464-2	1-2392464-1	0-2392464-3	0-2392464-2	0-2392464-1	DESCRIPTION	P/N	SL/NO
ASSY REV.	A	A	A	A	A	B	B	B	C	C	C	B	B	B	C	C	C			
ASSY DESCRIPTION	ACTUATOR, TYPE NACS 4W, MS, RESTRICTED	ACTUATOR, TYPE NACS 4W, LB, RESTRICTED	ACTUATOR, 24V, TYPE GB, 4W, MS, GENERAL	ACTUATOR, 24V, TYPE 2, 4W, MS, GENERAL	ACTUATOR, 24V, TYPE 1, 4W, MS, GENERAL	ACTUATOR, TYPE GB, 4W, MS, GENERAL	ACTUATOR, TYPE 2, 4W, MS, GENERAL	ACTUATOR, TYPE 1, 4W, MS, GENERAL	ACTUATOR, TYPE GB, 3W, MS, GENERAL	ACTUATOR, TYPE 2, 3W, MS, GENERAL	ACTUATOR, TYPE 1, 3W, MS, GENERAL	ACTUATOR, TYPE GB, 3W, MS, GENERAL	ACTUATOR, TYPE 2, 3W, MS, GENERAL	ACTUATOR, TYPE 1, 3W, MS, GENERAL	ACTUATOR, TYPE GB, 4W, MS, GENERAL	ACTUATOR, TYPE 2, 4W, MS, GENERAL	ACTUATOR, TYPE 1, 4W, MS, GENERAL			

THIS DRAWING IS A CONTROLLED DOCUMENT. DIMENSIONING AND TOLERANCING PER GPS (ISO STANDARDS)

DMN: NAVEEN S 21JUN2021
CHK: A STINE 21JUN2021
APVD: E.W. ITRROCK 21JUN2021

NAME: GENERAL MARKET ACTUATOR

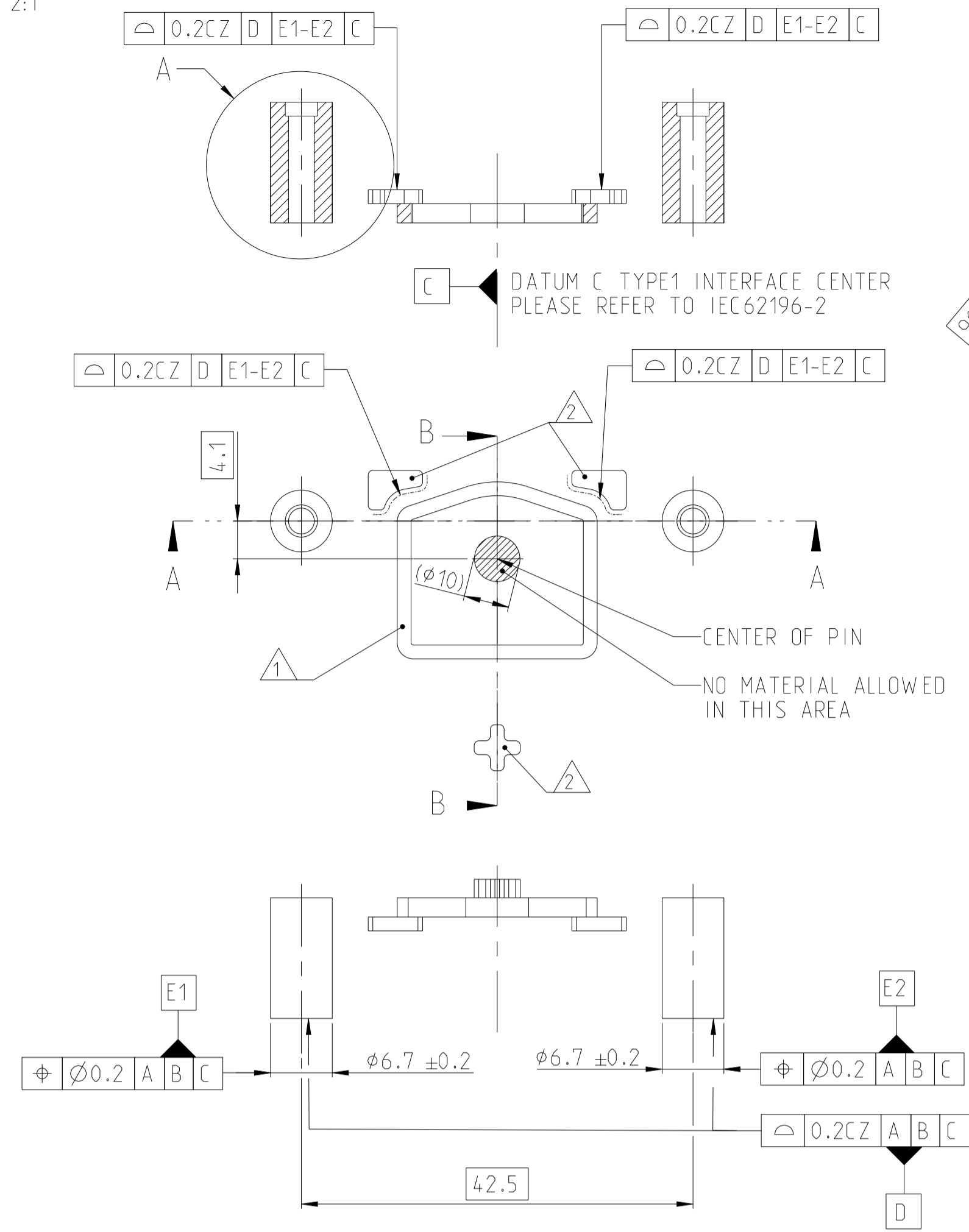
SIZE: 108-94519
APPLICATION SPEC

MATERIAL: TBD
FINISH: -

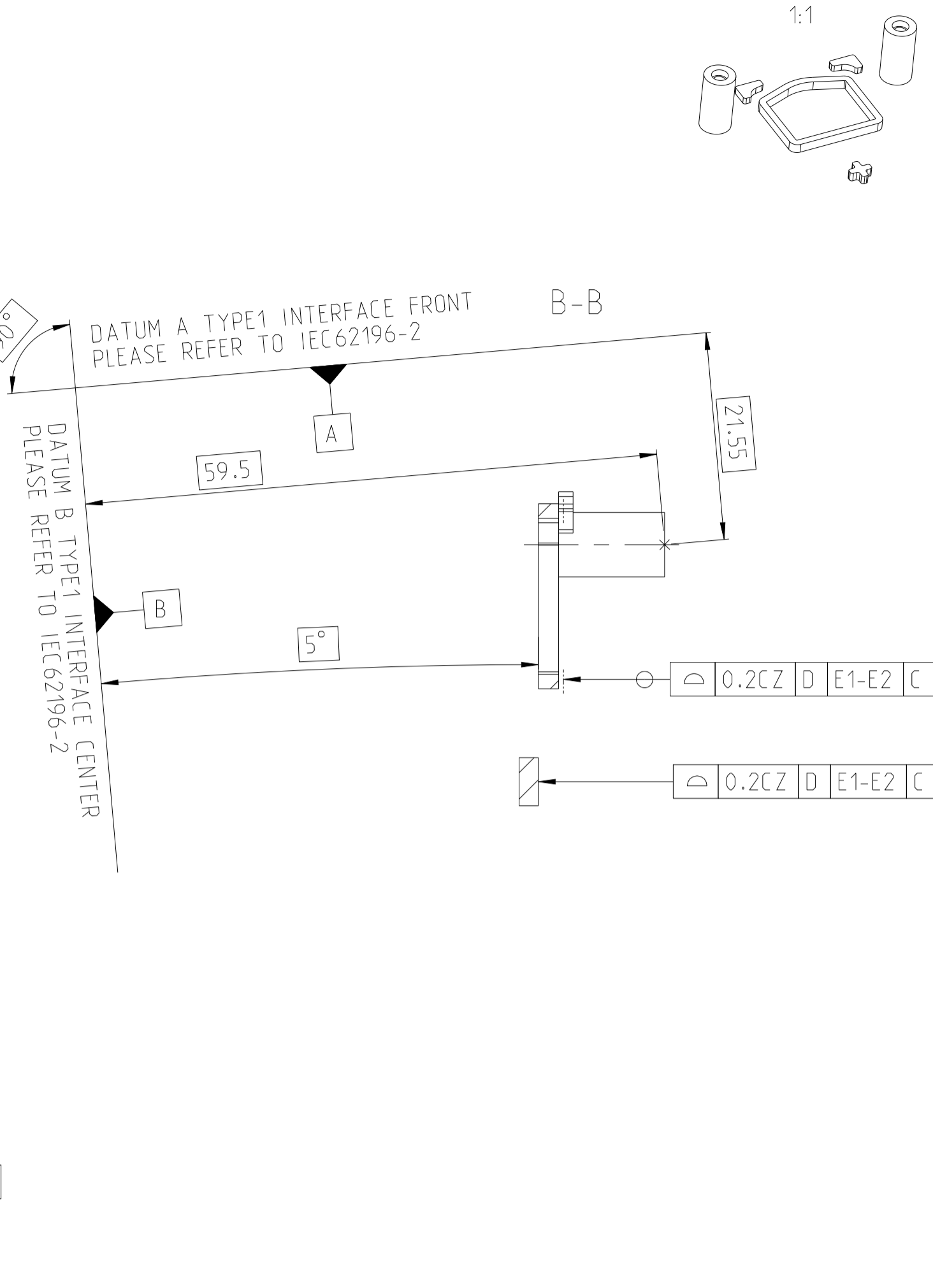
WEIGHT: -
CUSTOMER DRAWING

SCALE: 1:1
SHEET: 1 OF 3
REV: C

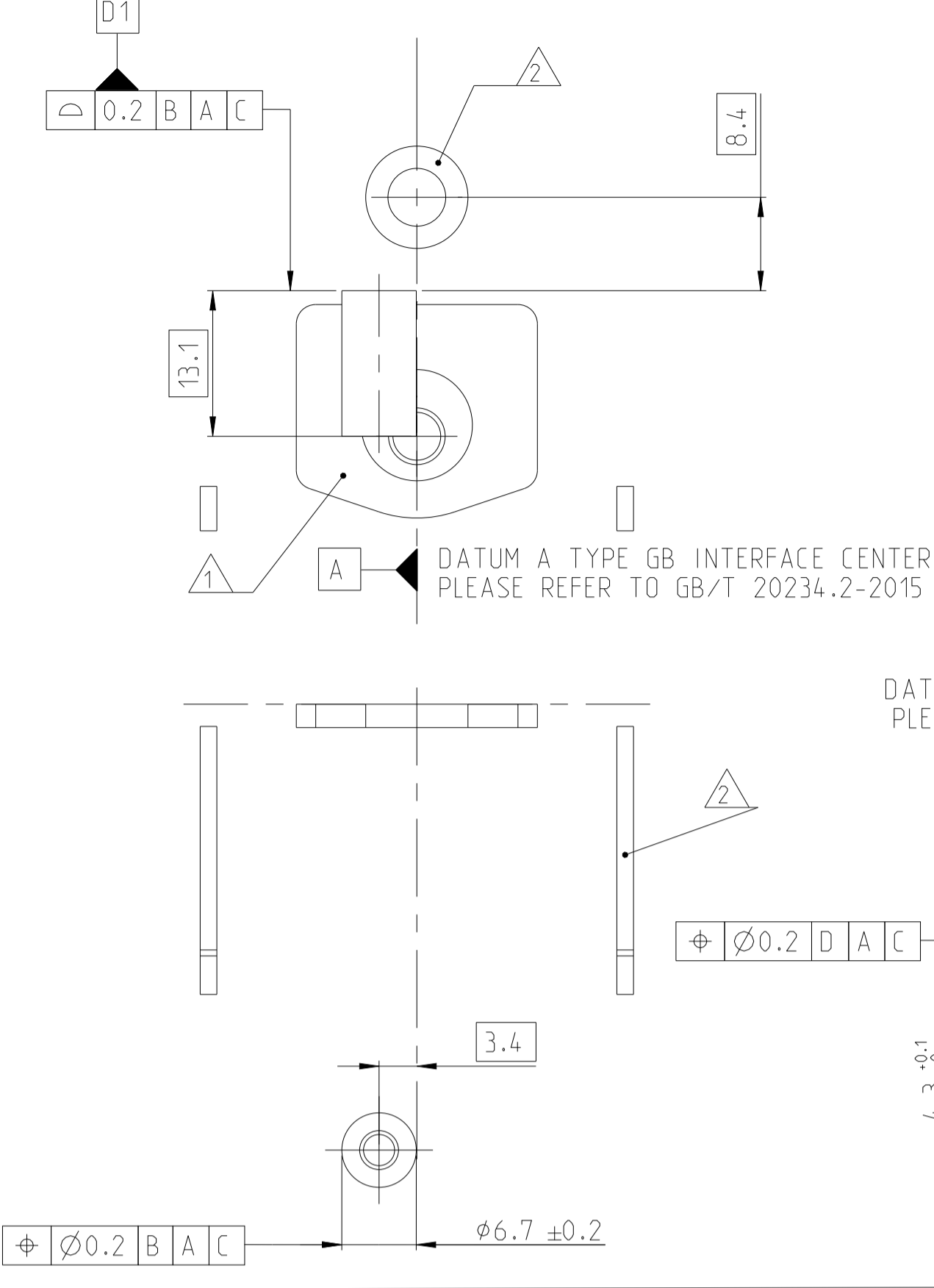
8
 © 2024 TE Connectivity. All Rights Reserved.
INTERFACE TYPE 1 HSG FOR ACTUATOR
 2:1



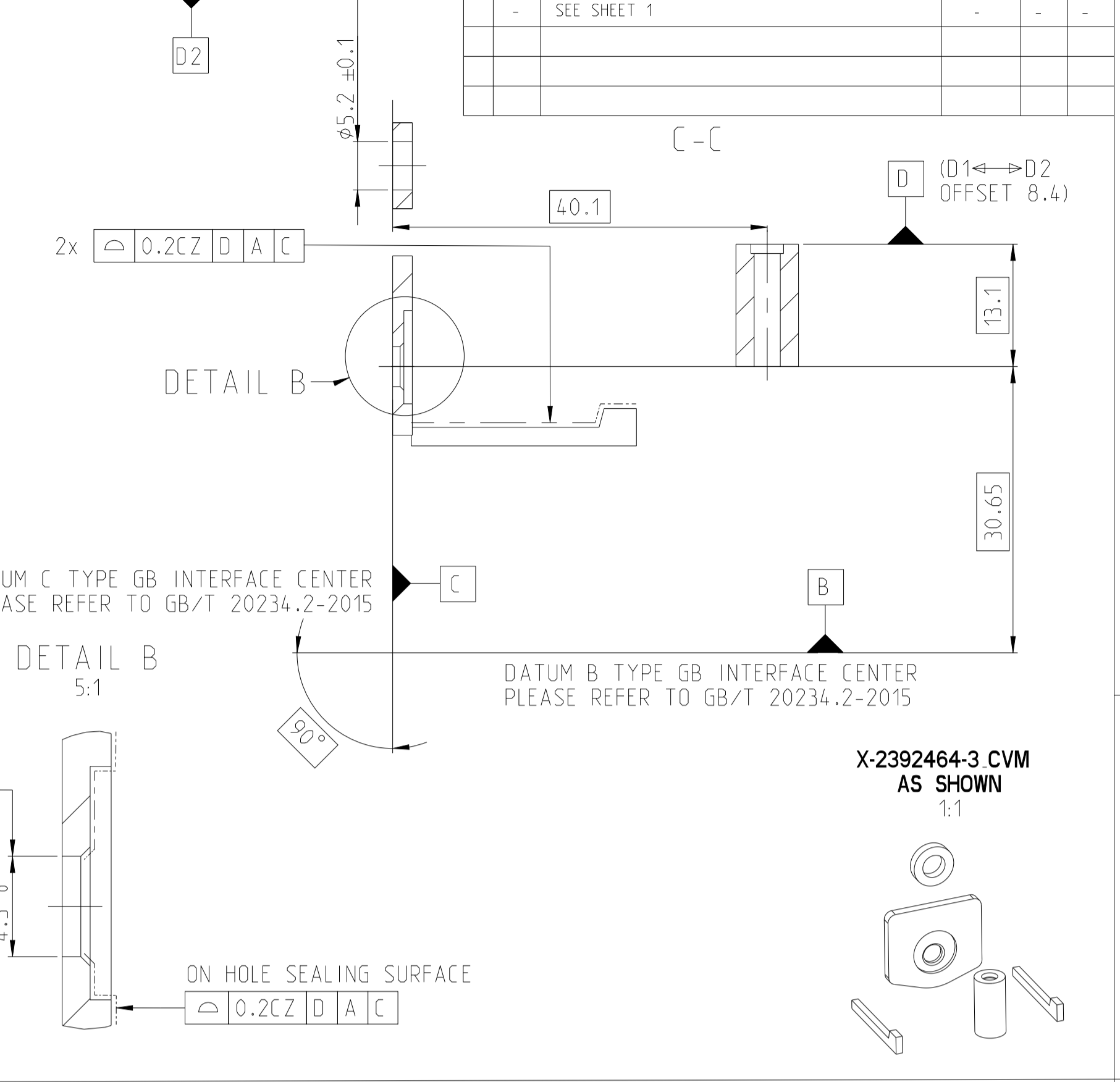
7
X-2392464-1 CVM AS SHOWN
 1:1



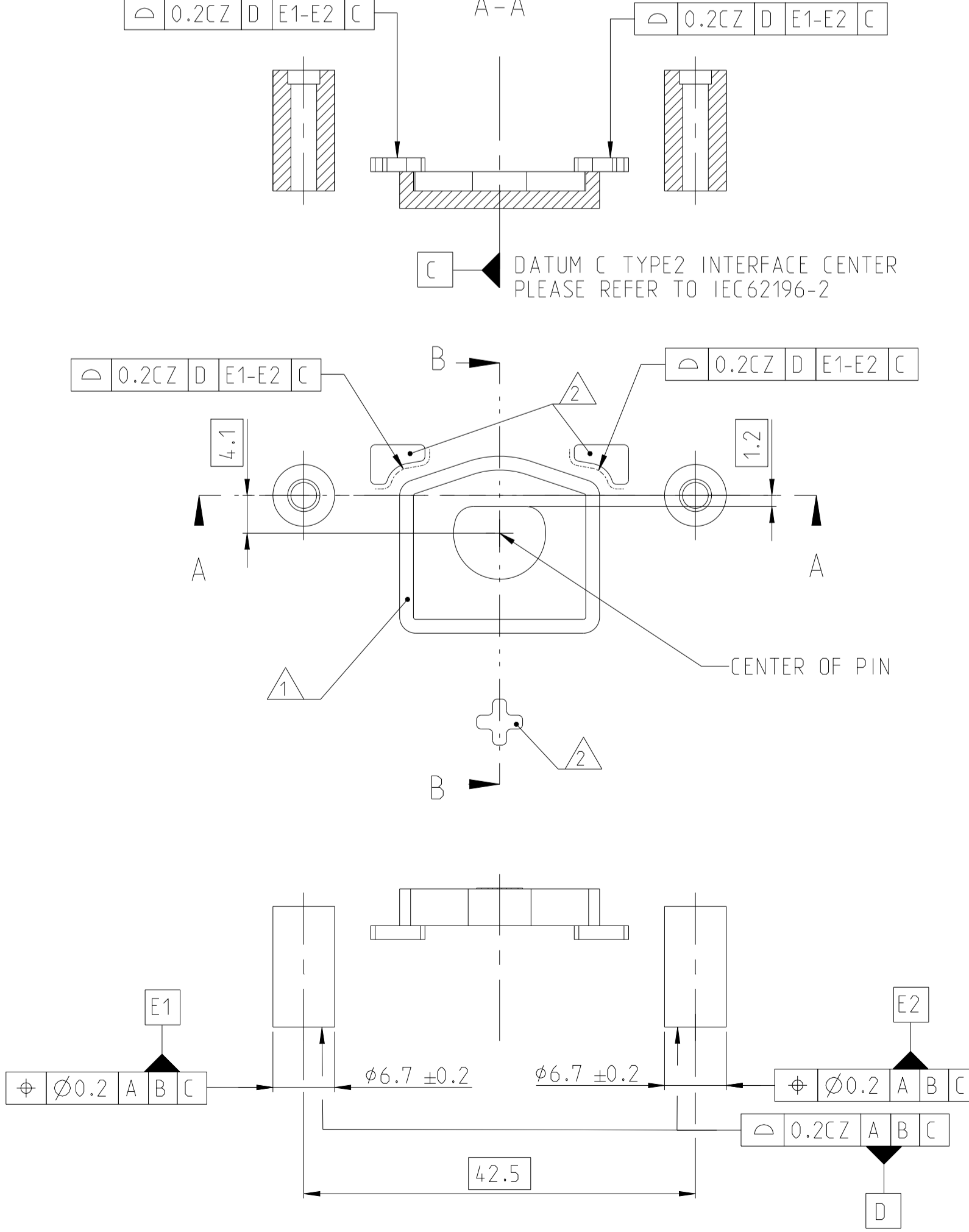
4
INTERFACE TYPE GB HSG FOR ACTUATOR (OPTION 1)
 2:1



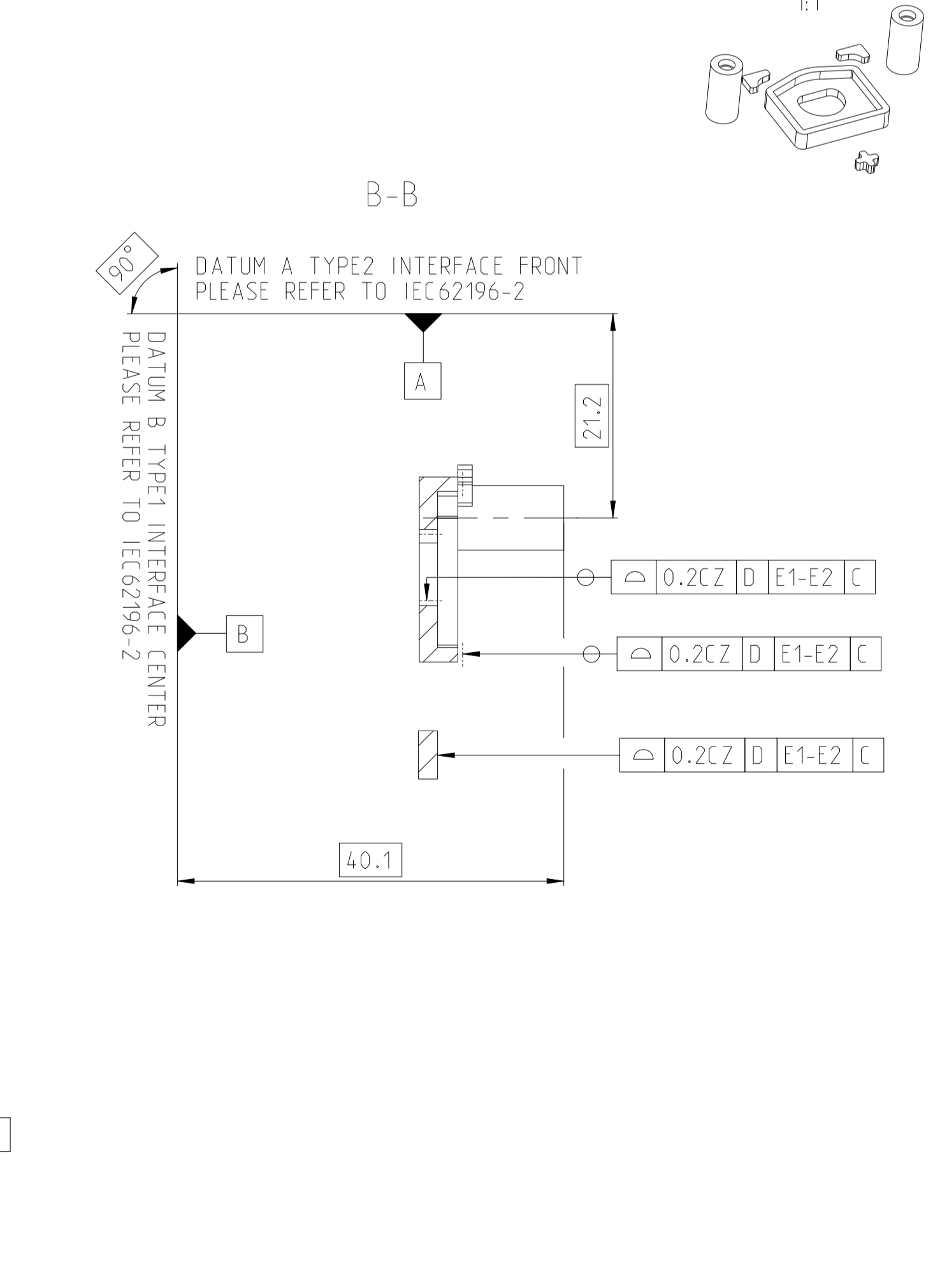
3
 REVISIONS



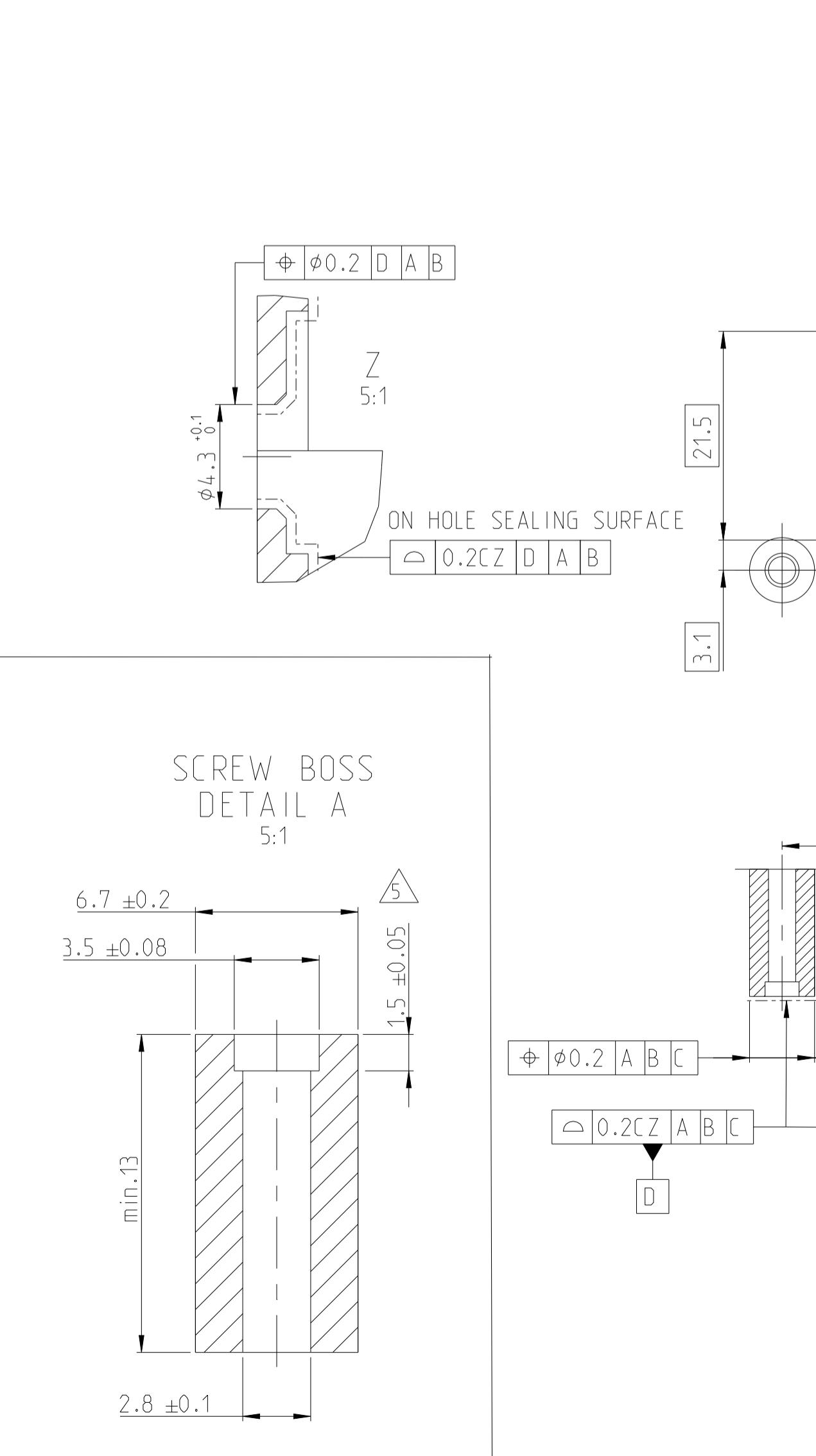
6
INTERFACE TYPE 2 HSG FOR ACTUATOR
 2:1



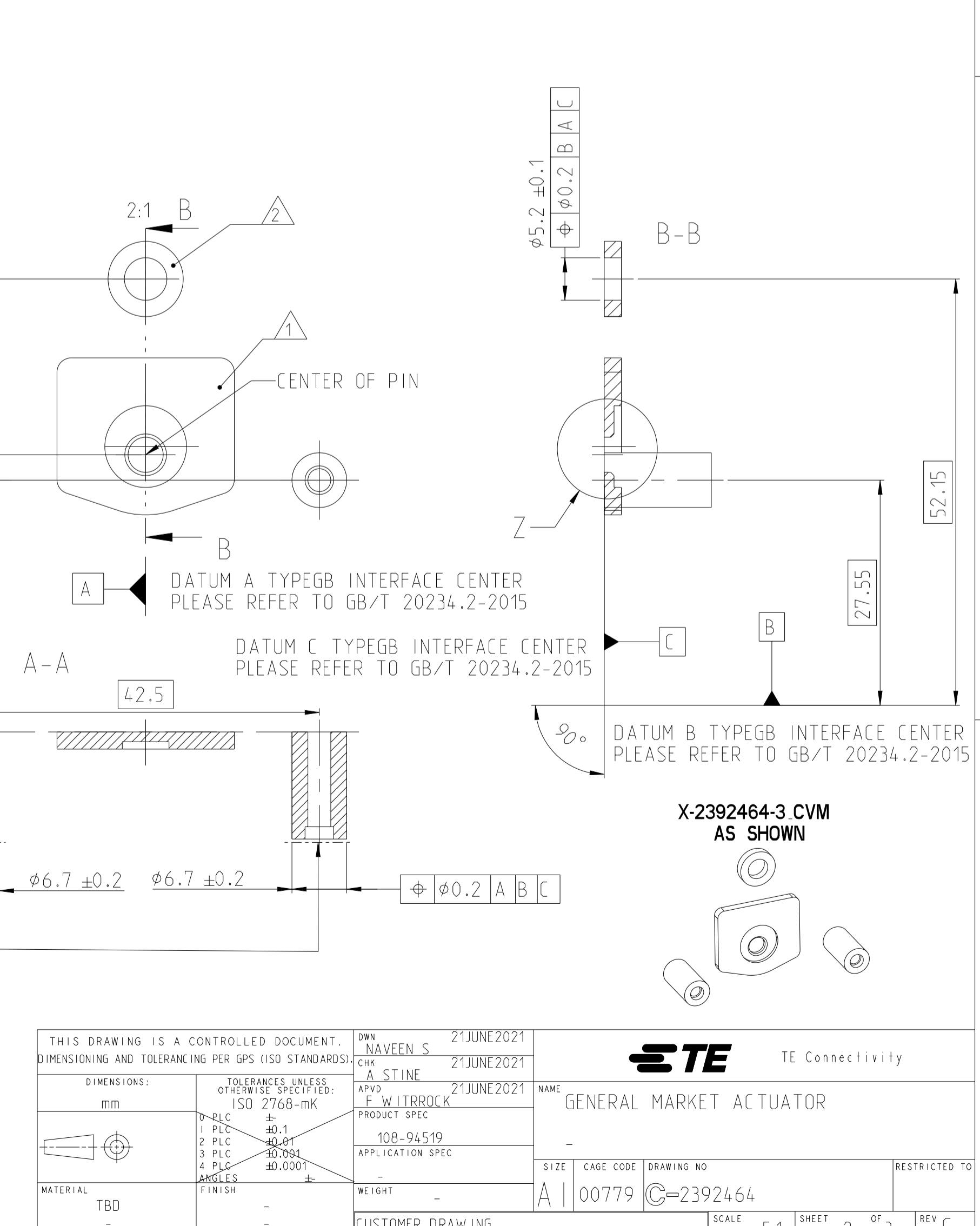
5
X-2392464-2 CVM AS SHOWN
 1:1



2
INTERFACE TYPE GB HSG FOR ACTUATOR (OPTION 2-NEW DEVELOPMENTS)



1
X-2392464-3 CVM AS SHOWN
 1:1

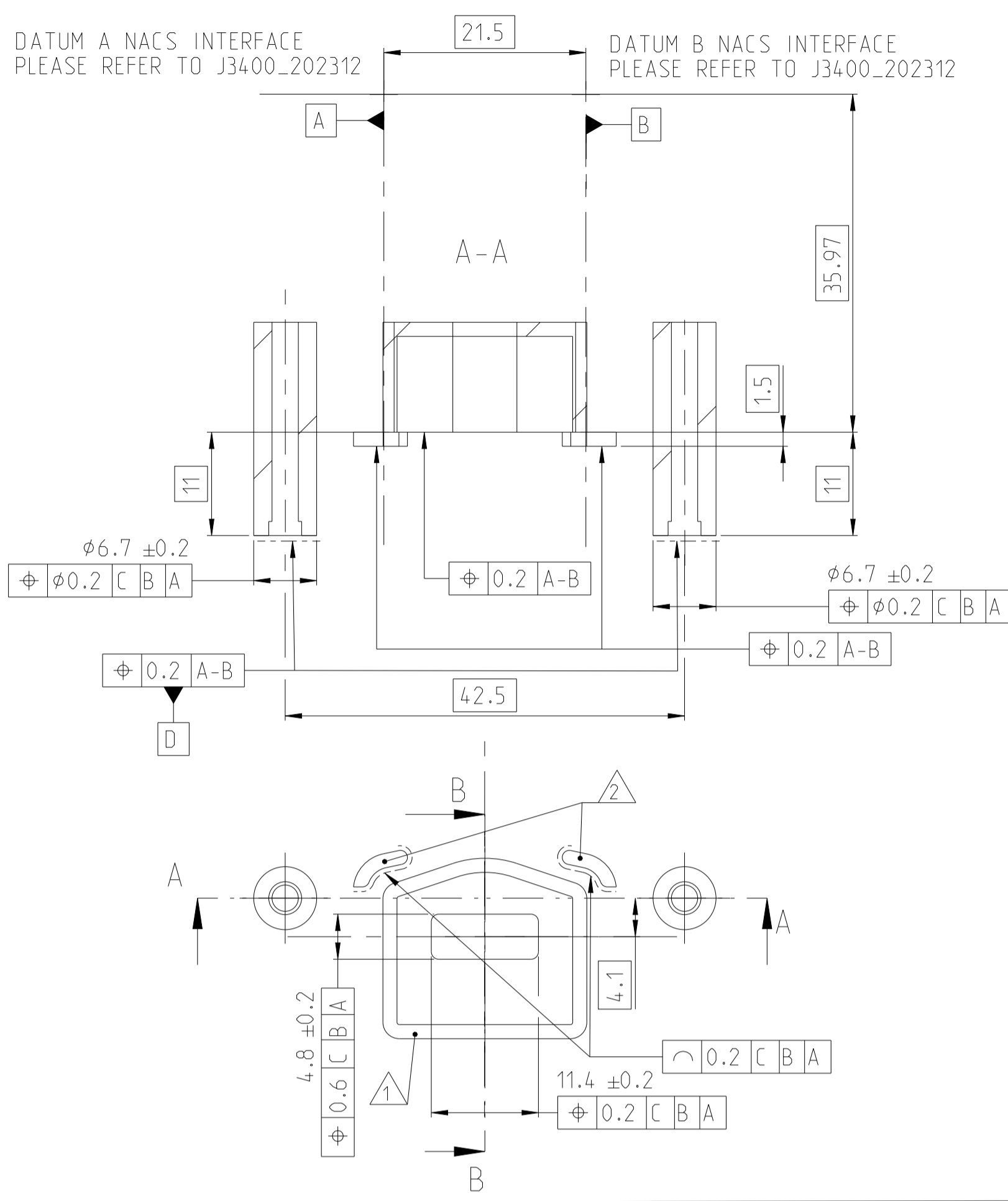


THIS DRAWING IS A CONTROLLED DOCUMENT. DIMENSIONING AND TOLERANCING PER GPS (ISO STANDARDS)		OWN: NAVEEN S 21JUNE2021	CHK: A STINE 21JUNE2021	APVD: F W WITROCK 21JUNE2021	NAME: GENERAL MARKET ACTUATOR
DIMENSIONS: mm	TOLERANCES UNLESS OTHERWISE SPECIFIED: ISO 2768-mK	SIZE: 108-94519	PRODUCT SPEC: APPLICATION SPEC	WEIGHT: -	RESTRICTED TO: -
MATERIAL: TBD	FINISH: -	SCALE: 5:1	SHEET: 2 OF 3	DRAWING NO: 00779	REV: C

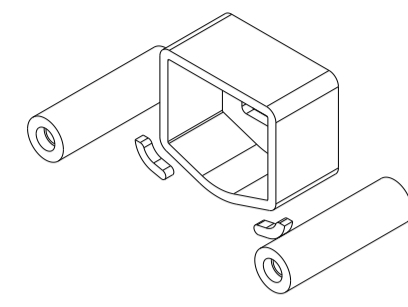
INTERFACE TYPE NACS FOR ACTUATOR

DATUM A NACS INTERFACE
PLEASE REFER TO J3400_202312

DATUM B NACS INTERFACE
PLEASE REFER TO J3400_202312

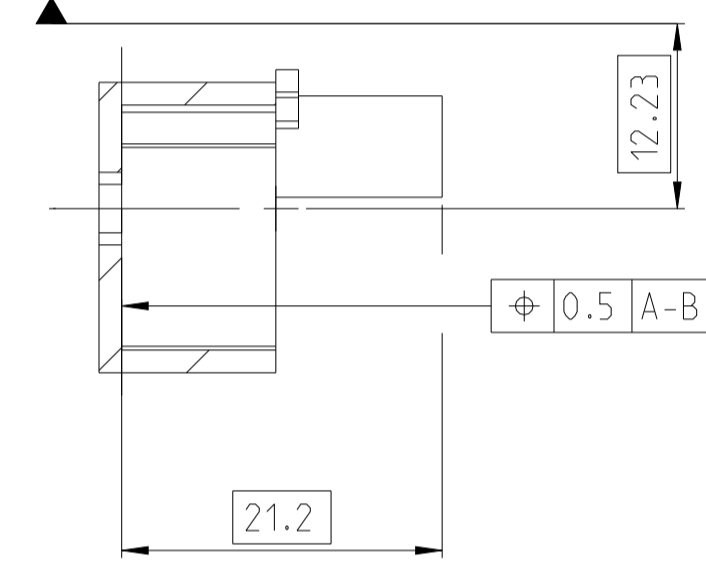


**X-2392464-4
CVM
AS SHOWN**



B-B

DATUM C NACS INTERFACE
PLEASE REFER TO J3400_202312



REVISIONS				
P	LTN	DESCRIPTION	DATE	APVD
		SEE SHEET 1		

NOTES:

- 1 MINIMUM INTERFACE SURFACE TO ACTUATOR SEALING MUST BE ACCORDING TO THE CONTROLLED CAD MODEL. SEE NOTE 4
- 2 OPTIONAL SUPPORTING SURFACES
- 3 UNSPECIFIED GENERAL TOLERANCE TO BE $\pm 0.4CZ A B C$ ALL OVER UNLESS OTHERWISE STATED
- 4 CONTROLLED CAD-MODEL PRO-E FILES
 X-2392464-1_CVM.asm REV. 1 (TYPE1 INTERFACE)
 X-2392464-2_CVM.asm REV. 1 (TYPE2 INTERFACE)
 X-2392464-3_CVM.asm REV. 1 (TYPE GB INTERFACE)
 X-2392464-4_CVM.asm REV. 1 (TYPE NACS INTERFACE)
- 5 SCREW BOSS DESIGN:
 BASE MATERIAL: PA6-GF30-FR
 SCREW TORQUE: 1.0 - 1.2 Nm. SEE PRODUCT SPECIFICATION 108-94519

 TORQUE VALUES AND SCREW BOSS DIMENSIONS NEEDS TO BE VERIFIED, IF OTHER BASE MATERIAL IS USED IN APPLICATION.
- 6 ELECTRICAL, MECHANICAL AND ENVIRONMENTAL PERFORMANCE OF ACTUATOR NEEDS TO BE VALIDATED IN APPLICATION ACCORDING TO TE PRODUCT SPECIFICATION 108-94519. THE PROTECTION AGAINST WATER AND DUST INGRESS IS ONLY GIVEN WHEN THE ACTUATOR IS MOUNTED ON SPECIFIED GEOMETRY.
- 7 TE CONNECTIVITY IS NOT RESPONSIBLE OR LIABLE IN ANY MANNER FOR ANY USER GENERATED DESIGN OF COUNTERPARTS AND ITS IMPACT ON ACTUATOR FUNCTION.

THIS DRAWING IS A CONTROLLED DOCUMENT. DIMENSIONING AND TOLERANCING PER GPS (ISO STANDARDS)		OWN: NAVEEN S CHK: AUSTINE APVD: F.W. ITRROCK	05AUG2024																										
DIMENSIONS: mm		TOLERANCES UNLESS OTHERWISE SPECIFIED:				NAME: GENERAL MARKET ACTUATOR																							
<table border="1"> <tr><td>0-PLC</td><td>±</td></tr> <tr><td>1-PLC</td><td>±0.1</td></tr> <tr><td>2-PLC</td><td>±0.05</td></tr> <tr><td>3-PLC</td><td>±0.001</td></tr> <tr><td>4-PLC</td><td>±0.0001</td></tr> <tr><td>ANGLES</td><td>±</td></tr> <tr><td>FINISH</td><td>±</td></tr> </table>		0-PLC	±	1-PLC	±0.1	2-PLC	±0.05	3-PLC	±0.001	4-PLC	±0.0001	ANGLES	±	FINISH	±	<table border="1"> <tr><td>PRODUCT SPEC</td><td>108-94519</td></tr> <tr><td>APPLICATION SPEC</td><td></td></tr> <tr><td>WEIGHT</td><td></td></tr> <tr><td>CUSTOMER DRAWING</td><td></td></tr> </table>		PRODUCT SPEC	108-94519	APPLICATION SPEC		WEIGHT		CUSTOMER DRAWING		SIZE: A	CAGE CODE: 00779	DRAWING NO: C=2392464	RESTRICTED TO: C
0-PLC	±																												
1-PLC	±0.1																												
2-PLC	±0.05																												
3-PLC	±0.001																												
4-PLC	±0.0001																												
ANGLES	±																												
FINISH	±																												
PRODUCT SPEC	108-94519																												
APPLICATION SPEC																													
WEIGHT																													
CUSTOMER DRAWING																													
MATERIAL: TBD		SCALE: 1:1		SHEET: 3 OF 3		REV: C																							