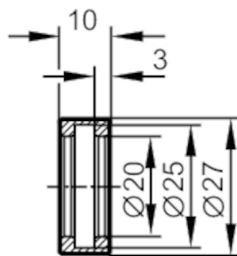


E21076



Connection piece for clamps

CLAMP LINKING RING D. 20MM



Application

Installation for the connection of two clamps with Ø 20 mm

Mechanical data

Weight	[g]	16.1
Inside diameter	[mm]	20
Materials		stainless steel (316L/1.4404)

Remarks

Pack quantity 1 pcs.