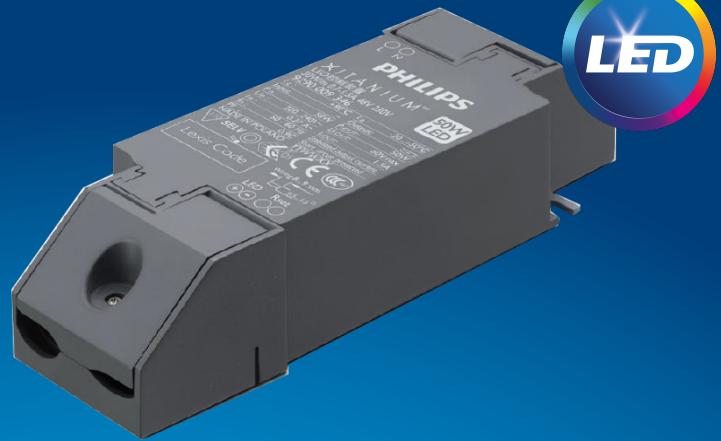


# PHILIPS

## Xitanium

### LED driver



## Datasheet

### Xitanium LED drivers - Mini wireless

Xitanium 36W/m 0.15-1.05A 48V MC 230V

9290 034 63006

#### Enabling simple, cost effective wireless lighting system

Xitanium Mini wireless LED drivers are designed to operate LED solutions for general lighting applications. They enable simple, cost effective wireless lighting system for energy saving and comfort. Advanced design of the Mini wireless drivers helps to build a simple, scalable and standardized connected lighting with different functionalities from simple wireless dimming to cloud based operations and integration with gateways.

Wireless mini drivers can be configured via smart devices with MasterConnect app as standalone or in a mesh network. With Xitanium LED drivers, flexibility in luminaire design is assured thanks to the Adjustable Output Current (AOC). Application-oriented operating windows offer stable lumen output and light quality levels that specifiers and architects demand. The adjustable output current also enables operation of various LED PCB solutions from different manufacturers.

#### Features

- Compatible with Zigbee wireless protocols
- Operating windows - With SimpleSet feature, output current can be adjusted via the Philips MultiOne configurator
- Wide operating window: With extended operating window, availability of a wide output current from 0.15A to 1.05A that also helps complexity management
- Wide range of power ratings
- Traditional Mini design which can be used both as a built-in driver and an independent driver with add on caps

#### Benefits

- Enabling simple, scalable and standardized connected lighting system
- High reliability underpinned by 5-year warranty
- Lower installation cost for lighting control
- Future-proof flexibility - application-oriented operating windows enable LED generation and complexity management
- Wide range of use cases: From standalone to cloud based / gateway operations

#### Application

- Retail
- Hospitality
- Office

## Logistical data

Specification item	Value
Product name	Xitanium 36W/m 0.15-1.05A 48V MC 230V
EOC	872016929397700
Logistic code 12NC	9290 034 63006
EAN1 (GTIN)	8720169293977
EAN3 (box)	8720169293984
Pieces per box	20
Weight	88 gram

## Electrical input data

Specification item	Value	Unit	Condition
Rated input voltage range	220...240	V <sub>ac</sub>	Performance range
Rated input voltage	230	V <sub>ac</sub>	
Rated input frequency	50...60	Hz	Performance range
Rated input current	0.2	A	@ rated output power @ rated input voltage
Max. input current	0.22	A	@ rated output power @ minimum performance input voltage
Rated input power	42.0	W	@ rated output power @ rated input voltage
Power factor	0.9		@maximum output power @ rated input voltage
Total harmonic distortion	20	%	@ rated output power @ rated input voltage
Efficiency	≥ 88.0	%	@ rated output power @ rated input voltage
Rated input voltage DC	186...250	V <sub>dc</sub>	Performance range, No external DC fuse is required
Rated input current DC	≤ 0.23	A <sub>dc</sub>	Performance range
Input voltage AC	198...264	V <sub>ac</sub>	Safety operational range
Input frequency AC	47.5...63	Hz	Safety operational range
Input voltage DC	168...275	V <sub>dc</sub>	Safety Operational range
Standby Power (W)	0.5	W	
Isolation input to output	SELV		

## Electrical output data

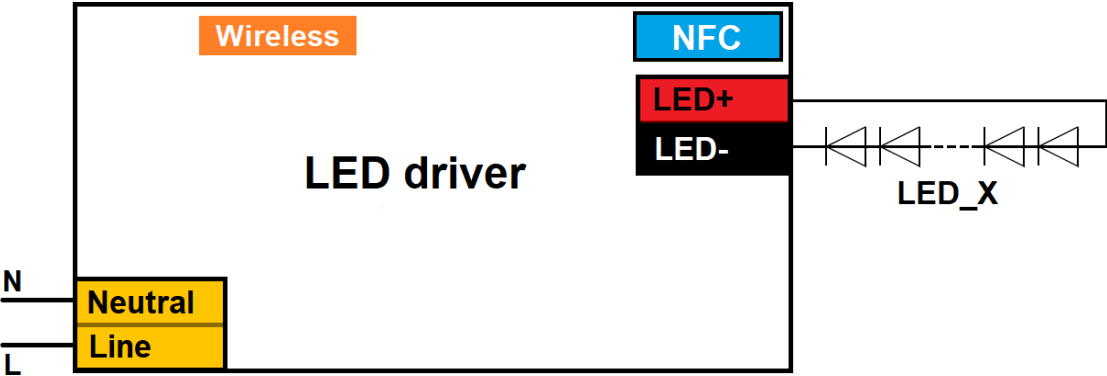
Specification item	Value	Unit	Condition
Regulation method	Constant Current		
Output voltage	24...48	V <sub>dc</sub>	
Output voltage max.	60	V	Maximum output voltage (rms)
Output current	150...1050	mA	
Output current min programmable	150	mA	
Min output current	6	mA	
Output current tolerance ±	5	%	
Output current ripple LF	≤ 4	%	Ripple = peak / average, < 3kHz
Output P <sub>st</sub> <sup>LM</sup>	≤ 0.3		
Output SVM	≤ 0.4		
Output power	0.1...36.0	W	
Minimum performance output power	6	W	Power factor > 0.9 and THD < 20%

Control interfaces

Specification item	Value	Unit	Condition
Control method	Wireless		Wireless protocol Zigbee by Switch and BLE by App
Dimming range	1...100	%	Dimming via MasterConnect app / wireless switches
Isolation controls input to output	No		acc. IEC61347-1

Wiring and Connections

Specification item	Value	Unit	Type
Input wire cross-section	0.5...1.5 / 20...16	mm² / AWG	solid / stranded wire
Input wire strip length	8.5...9.5	mm	
Output wire cross-section	0.5...1.5 / 20...16	mm² / AWG	solid / stranded wire
Output wire strip length	8.5...9.5	mm	
Maximum cable length	0.6	m	Total length of wiring including LED module, one way

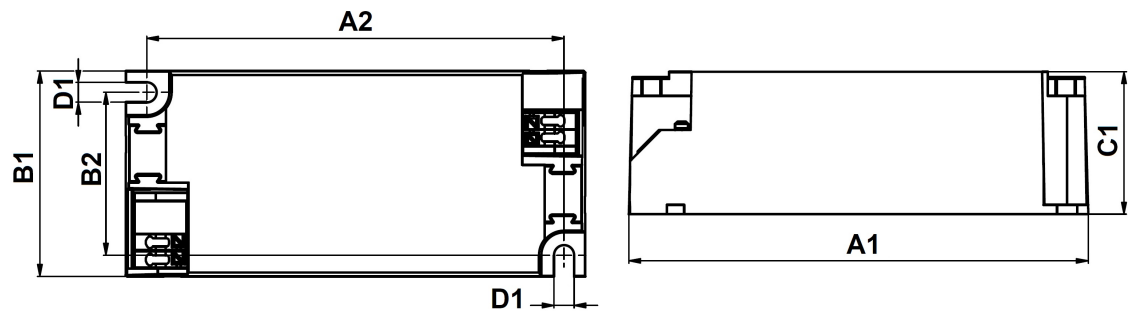


Isolation

Insulation per IEC61347-1	Input	Output
Input	-	SELV
Output	SELV	-

Dimensions and weight

Specification item	Value	Unit	Tolerance (mm)
Length (A1)	97.2	mm	
Mounting hole distance (A2)	88.5	mm	
Width (B1)	43	mm	
Width (B2)	34	mm	
Height (C1)	30	mm	
Mounting hole diameter (D1)	4.2	mm	
Weight	88	gram	

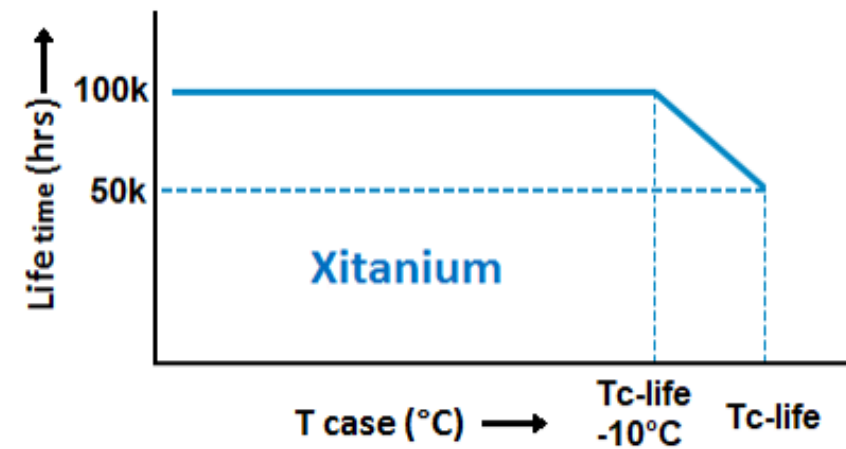


Operational temperatures and humidity

Specification item	Value	Unit	Condition
Ambient temperature	-25...+50	°C	Higher ambient temperature allowed as long as Tcase-max is not exceeded
Tcase-max	85	°C	Maximum temperature measured at Tcase-point
Tcase-life	75	°C	Measured at Tcase-point measured at Tc-point
Maximum housing temperature	110	°C	In case of a failure, inherent by design
Relative humidity	10...90	%	Non-condensing

Lifetime

Specification item	Value	Unit	Condition
Driver lifetime	50,000	hours	Measured temperature at Tcase-point is Tcase-life.



Maximum failures = 10%

Storage temperature and humidity

Specification item	Value	Unit	Condition
Ambient temperature	-25...+85	°C	
Relative humidity	5...95	%	Non-condensing

Programmable features

Specification item	Available	Default setting	Condition
Set Adjustable Output Current (AOC)	SimpleSet	150 mA	
Adjustable Light Output (ALO)	Yes	OFF	
Constant Light Output (CLO)	Yes	OFF	
Min Dim Level (%)	Yes	1 %	
DC emergency (DCemDim)	Yes	ON	Current output decreased to 15% (EOFx)
DALI control supported at DC operation	Yes	OFF	
OEM Write Protection (OWP)	Yes		
Luminaire Info (DALI part 251)	Yes		
Tx Power	Yes	8 dBm	Set the Tx power (strength of the wireless BLE / Zigbee signal)

Non-programmable features

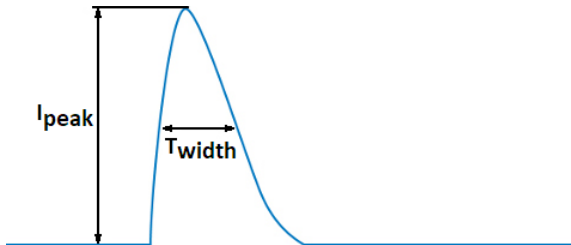
Specification item	Value		Condition
Open load protection	Yes		Automatic recovering
Short circuit protection	Yes		Automatic recovering
Over power protection	Yes		Automatic recovering
Hot wiring	No		
Suitable for fixtures with protection class	I and II		per IEC60598
Energy metering (DALI part 252)	Yes		Accuracy is 4%
Diagnostics via Signify tool	Yes		Diagnostics data related to mainsvoltage is inaccurate when output power is less than 50%.

## Inrush current

Specification item	Value	Unit	Condition
Inrush current	4.8	A	Input voltage 230V
Inrush peak width	56	μs	Input voltage 230 V, measured at 50% height
Drivers / MCB 16A type B @230V AC	≤ 50	pcs	Input voltage 230V

Please refer to the driver design in guide if you use other MCB-types.

If several mini circuit breakers are used directly side-by-side (without distance pieces)  
a correction factor of 80% has to be applied to the rated current



## Driver touch current / protective conductor current / earth leakage current

Specification item	Value	Unit	Condition
Typical Touch Current (ins. Class II)	0.7	mA peak	Acc. IEC61347-1. LED module contribution not included

## Surge immunity

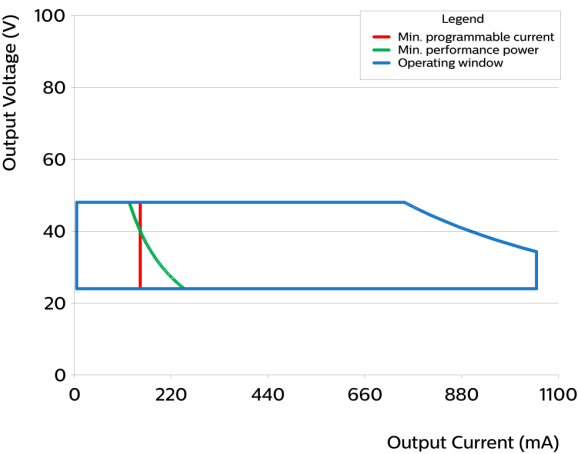
Specification item	Value	Unit	Condition
Mains surge immunity (diff. mode)	1	kV	Acc. IEC61000-4-5. 2 Ohm, 1.2/50us, 8/20us
Mains surge immunity (comm. mode)	2	kV	Acc. IEC61000-4-5. 12 Ohm 1.2/50us,8/20us

## Application Info (Approbation)

Specification item	Value
Approval marks and Certifications	BLE alliance / CCC / CE / EL / ENEC / KC / RCM / SELV / SRRC / TISI
Ingress Protection classification (IP)	20
Application	Indoor Point
Mounting Type	Built-in / Independent

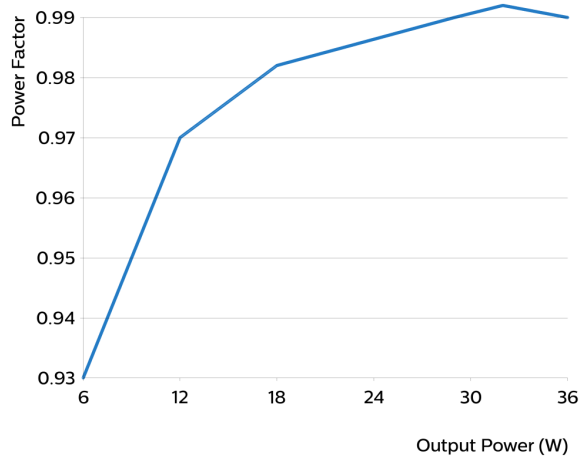
Graphs

Operating window

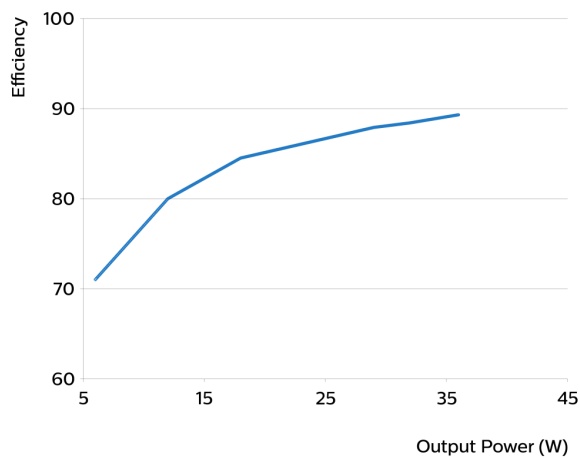


Type	Output current (mA)	Min. output voltage (V)	Max. output voltage (V)	Max. output power (W)
Xitanium 36W/m 0.15-1.05A 48V MC 230V	150	24	48	7.2
Xitanium 36W/m 0.15-1.05A 48V MC 230V	200	24	48	9.6
Xitanium 36W/m 0.15-1.05A 48V MC 230V	250	24	48	12
Xitanium 36W/m 0.15-1.05A 48V MC 230V	300	24	48	14.4
Xitanium 36W/m 0.15-1.05A 48V MC 230V	350	24	48	16.8
Xitanium 36W/m 0.15-1.05A 48V MC 230V	400	24	48	19.2
Xitanium 36W/m 0.15-1.05A 48V MC 230V	450	24	48	21.6
Xitanium 36W/m 0.15-1.05A 48V MC 230V	500	24	48	24
Xitanium 36W/m 0.15-1.05A 48V MC 230V	550	24	48	26.4
Xitanium 36W/m 0.15-1.05A 48V MC 230V	600	24	48	28.8
Xitanium 36W/m 0.15-1.05A 48V MC 230V	650	24	48	31.2
Xitanium 36W/m 0.15-1.05A 48V MC 230V	700	24	48	33.6
Xitanium 36W/m 0.15-1.05A 48V MC 230V	750	24	48	36
Xitanium 36W/m 0.15-1.05A 48V MC 230V	800	24	45	36
Xitanium 36W/m 0.15-1.05A 48V MC 230V	850	24	42	36
Xitanium 36W/m 0.15-1.05A 48V MC 230V	900	24	40	36
Xitanium 36W/m 0.15-1.05A 48V MC 230V	950	24	37	36
Xitanium 36W/m 0.15-1.05A 48V MC 230V	1000	24	36	36
Xitanium 36W/m 0.15-1.05A 48V MC 230V	1050	24	34	36

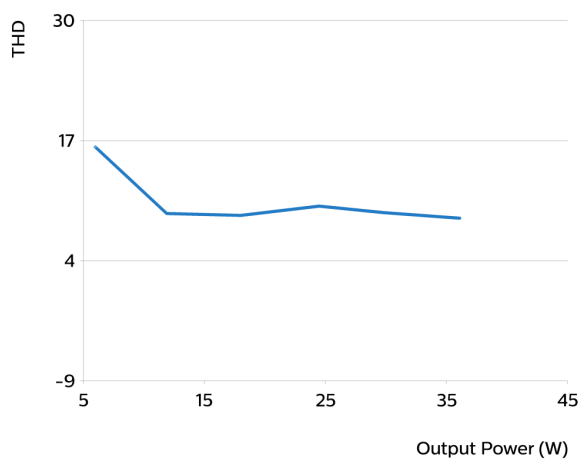
Power factor versus output power



Efficiency versus output power



THD versus output power





## Notes

---

### Notes

- For MultiOne configuration, two functions (Tx power and FCC/RED test mode) were removed, comparing with the base model. These two functions will be configured via Bluetooth (MC APP) in new drivers.
- Product fail to meet requirement of CEAG Star-Tech compatibility test. So it actually cannot comply with the standard of EATON



©2024 Signify Holding, IBRS 10461, 5600 VB, NL. All rights reserved.  
UK importer address: Signify Commercial UK Limited, 3, Guildford Business Park, GU2 8XG.

The information provided herein is subject to change without notice. Signify does not give any representation or warranty as to the accuracy or completeness of the information included herein and shall not be liable for any action in reliance thereon. The information presented in this document is not intended as any commercial offer and does not form part of any quotation or contract, unless otherwise agreed by Signify.

Philips and the Philips Shield Emblem are registered trademarks of Koninklijke Philips N.V. All other trademarks are owned by Signify Holding or their respective owners.

Date of release: November 22, 2024 v1

[www.philips.com/oem](http://www.philips.com/oem)