

DC Connector, Plug, 5.5x2.1 mm, 2-pole, angled, with cable



### Description

- pre-assembled cable
- Low Voltage DC Plug and Socket
- DC Plug: 2-pole, angled

### Weblinks

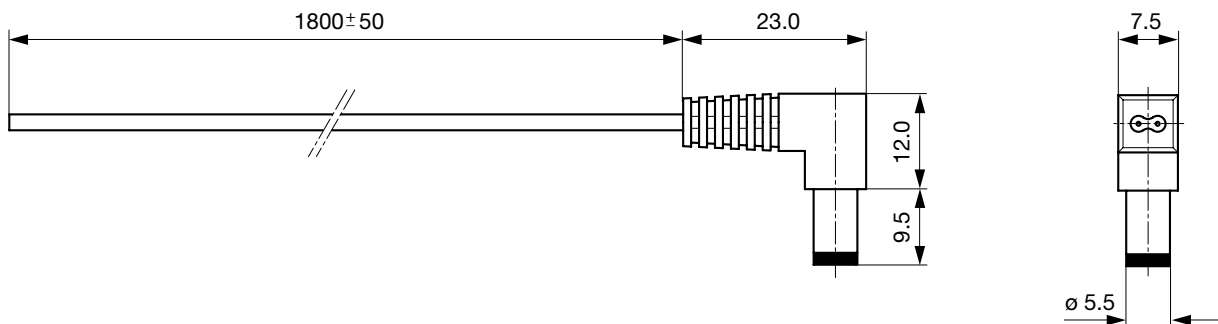
[pdf-datasheet](#), [html-datasheet](#), [General Product Information](#), [RoHS](#), [CHINA-RoHS](#), [Mating Connectors](#), [e-Shop](#), [SCHURTER-Stock-Check](#), [Distributor-Stock-Check](#)

### Technical Data

Diameter	5.5 mm / 2.1 mm
Number of Poles	2-pole
Ratings DC	0.5A / 12VDC
Dielectric Strength	500VDC
Insulation Resistance	> 100 MΩ @ 500VDC

Allowable Operation Temp.	-20 °C to 70 °C
Terminal	Cable
Cord Length	1.8 m
Cable Length	2 x 0.3 mm <sup>2</sup>
Style	angled
Lifetime	5000 Insertions

### Dimensions



### Variants

Product group	Diameter [mm]	Number of Poles	Terminal	Order Number
DC Plug/Socket	5.5	2-pole	Cable	4840.5201

Packaging unit 200 Pcs

### Mating Outlets/Connectors

#### Category / Description



#### DC Plug/Socket Overview complete

DC Connector, Plug, 6.3 mm, 2.00 mm, 2-pole, solder terminal	4840.2200
DC Connector, Socket, 6.0 mm, 2.00 mm, 2-pole, solder terminals for PCB	4840.2201
DC Connector, Plug, 5.5x2.1 mm, 2-pole, straight, with cable	4840.5202
<a href="#">DC Plug/Socket further types to 4840 DC-Stecker, verschiedene</a>	