

S27 RELAY

SHORI

◆ Features

- 35A switching capacity.
- Applicable to inverter used for photovoltaic power generation systems.
- Ideal for UPS.
- Contact gap 1.5mm,2.0mm,2.3mm(compliant with Photovoltaic Standard VDE0126 and IEC62109).
- Low coil holding voltage contributes to saving energy of equipment.
- The clearance distance between contact and coil is bigger than 6.4mm, the creep distance between contact and coil is bigger than 8mm.

◆ Coil Data [at 23°C]

Rated voltage (V)	Coil Resistance ±10% (Ω)	Rated Current ±10% (mA)	Pick up Voltage (Max)	Drop out Voltage (Min)	Max continuous Voltage ⁽¹⁾	Power consumption At rated Voltage	Holding voltage ⁽²⁾
6	26	230	75% of rated voltage	10% of rated voltage	120% Max of Rated voltage	Approx.1.4W	35% to 120% U _N (at 23° C) 45% to 80% U _N (at 85° C)
9	58	155					
12	103	116					
18	230	78					
24	410	58					

Note:

*1)Maximum continuous voltage refers to the voltage which relay coil could endure in a short period of time

*2)The coil holding voltage is the voltage of coil after being applied rated voltage for 100ms. The relay coil does not allow applied more than maximum of holding voltage value for a long time,prevent overheating burned

◆ Contact Rating

Resistive load	35A/250VAC 33A/277VAC 31A/277VAC(for gap 2.3mm)
Max. switching current	35A
Max. switching voltage	277VAC
Max. switching capacity	9141VA

◆ Type List

Terminal style	Contact form	Designation(provided with)
PCB terminal	1A (SPNO)	S27-12-1A

◆ Ordering information

S27 - 12 - 1A

1 2 3

1. S27 -- Basic series designation
2. 12 -- Coil Voltage (6V~24V)
3. 1A -- 1 Form A, Single pole normally open

◆ Specification

Contact material	Ag Alloy	
Contact resistance	100 mΩ Max	
Operate time	20 ms Max	
Release time	10 ms Max	
Insulation resistance	1000 MΩ Min. (DC 500V)	
Dielectric strength	Between open contact : AC 2500V ,50/60Hz 1 min.	
	Between contact and coil : AC 4500V, 50/60Hz 1 min.	
Vibration resistance	Operating extremes	10~50Hz, amplitude 1.5 mm
	Damage limits	10~50Hz, amplitude 1.5 mm
Shock resistance	Operating extremes	10G
	Damage limits	100G
Life expectancy	Mechanical	10,000,000 operations (frequency 18,000 operations/hr)
	Electrical	30,000 operations (frequency 360 operations/hr)
Operating ambient temperature	-40~+85°C(no freezing)	
Weight	Approx.22 g	

◆ Safety Approval

Certified	UL/CUL	TUV
File No.		

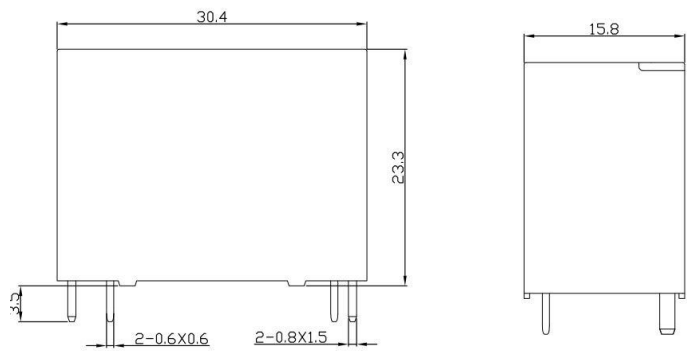
◆ Safety Approval Rating

35A/250VAC 33A/277VAC @85° C

S27 RELAY

SHORI

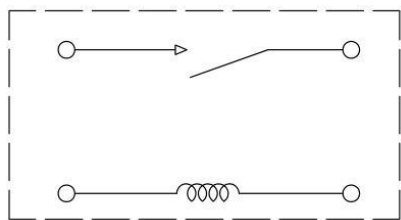
◆ Outline dimensions



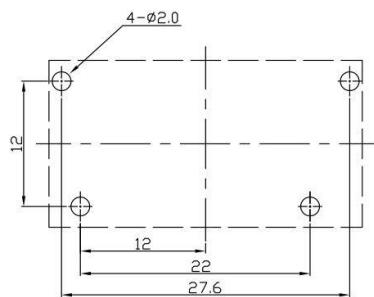
Dimention:mm

TOLERANCE:
<1mm:±0.2mm
1-5mm:±0.3mm
>5mm :±0.4mm

◆ Wiring Diagram (BOTTOM VIEW)



◆ PC Board Layout (BOTTOM VIEW)



◆ Engineering Data

MAXIMUM SWITCHING POWER

