

Specifications

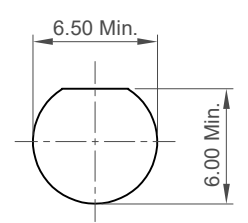
- Material**
1. Body: SUS316, Passivated
 2. Insulator A&B: Teflon
 3. Gasket A&B: Silicone Rubber, Red
 4. Pin A: Phosphor Bronze, Gold Plated
 5. Pin B: Brass, Gold Plated
 6. Barrel: Brass, Gold Plated
 7. O-Ring: See Ordering Grid
 8. Washer: SUS316
 9. Nut: SUS316, Passivated

- Electrical**
1. Impedance: 50 Ohm
 2. Working Frequency Range: DC - 6GHz

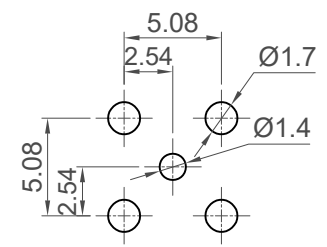
- Mechanical & Environmental**
1. Operating Temperature: - 65 °C to +165°C
 2. Ingress Protection Rating: IP68/IP69K
IP6X - Dust tight - no particle ingress.
IPX8 waterproof for 48 hours at 1 meter underwater.
IPX9K water spray, 14-16L per minute, at 8,000-10,000 Kpa, at 100-150mm distance for 30 seconds.

- Notes:**
1. If the connector is used in a corrosive environment, we recommend the connector face is protected with a stainless steel dust cap.
 2. Please use the recommended torque forces for stainless steel connectors. this is published on gct.co resources page.

Recommended Mounting Hole
 Applicable Panel Thickness:
 Min. 0.7mm ~ Max. 4.5mm



Recommended PCB Hole Layout
 Tolerance: ±0.05



Ordering Grid

RFPC - SMA36 - FN - X - X Request Samples and Quotation

Washer and nut options:
A = All Assembled with Connector (Standard)
 Blank = Separately Packed

O-ring Material Options:
E = EPDM, Colour: Black (Standard)
S = Silicone Rubber, Colour: Red

Part Number		Product Description		GCT www.gct.co
RFPC-SMA36-FN		SMA Bulkhead Jack, SUS316 Body, With O-ring, IP68/69K, PCB Mount, Vertical, 6GHz		
Drawing Date		19th May 2025		
By	CC	Tolerances (Except as Noted)	Units:	 This drawing is confidential and copyright of Global Connector Technology, Ltd (GCT). This drawing must not be copied or disclosed without written consent. E & OE
Detail	Drawing Release	Length	Metric (mm)	
Revision	A	Angle	3rd Angle Projection	
Date	19/05/25	± 0.20	-	
				Not to Scale
				Drawn By
				CC
				Sheet No.
				1/1