

DATASHEET

QUICKMOUNT WHITE DIRECT-MOUNT CABLE TIE BASE



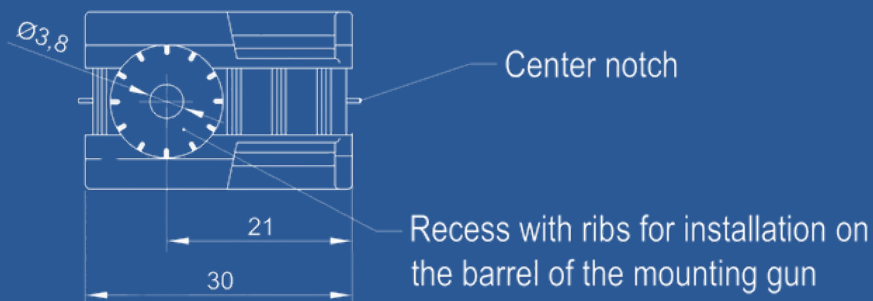
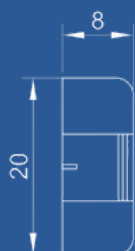
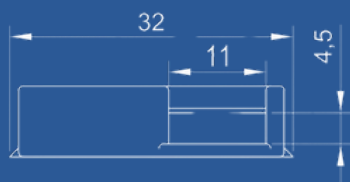
DESIGNED TO SECURE CABLE TIES FAST WITH DIRECT GUN OR SCREW MOUNTING

MATERIAL FIRE RESISTANCE according to UL94V2 - self-extinguishing

RESISTANCE TO solvents, greases and oils

WORKING TEMPERATURE $-30^{\circ}\text{C} \div 60^{\circ}\text{C}$

MATERIAL polyamide 6.6



ARTICLE	NAME	L, MM	W, MM	H, MM	HOLE Ø, MM	COLOR
QM20x30W	QuickMount Base	32	20	8	3,8	white