

D-Sub 15 pin female to RJ12 female Assembly Kit black

Description

This adapter by Delock expands a serial D-Sub 15 interface via an ISDN, telephone or RJ12 cable. The D-Sub 15 interface can be assigned individually and flexibly. The contacts of the adapter can be inserted into the D-Sub 15 housing according to the desired requirements. With a slight click, the sockets snap into place and provide reliable contact.



Item no. 67087

EAN: 4043619670871

Country of origin: China

Package: Zip poly bag

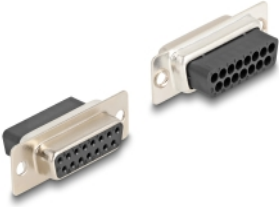
Technical details

- Connectors:
 - 1 x serial D-Sub 15 pin female
 - 1 x RJ12 jack
- RJ12 interface assigned with 6 pins, serial interface individually assignable
- Serial female port with screws
- Colour: black
- Dimensions (LxWxH): ca. 40 x 23 x 16 mm

Package content

- Adapter

Images



Interface

Connector 1:	1 x serial D-Sub 15 pin male
Connector 2:	1 x RJ12 jack

Physical characteristics

Length:	40 mm
Width:	23 mm
Height:	16 mm
Colour:	black

Manufacturer information

Street	Beeskowdamm 13/15
Postal code	14167
City	Berlin
Country	Deutschland
E-Mail	info@delock.de
Website	www.delock.de