



F&F Filipowski L.P.  
Konstantynowska 79/81, 95-200 Pabianice, POLAND  
phone/fax (+48 42) 215 23 83 / (+48 42) 227 09 71  
www.fif.com.pl; e-mail: biuro@fif.com.pl

**PSA-440**  
4-track,  
modular  
network-aggregate switch 40 A



**Do not dispose of this device in the trash along with other waste!**

According to the Law on Waste, electro coming from households free of charge and can give any amount to up to that end point of collection, as well as to store the occasion of the purchase of new equipment (in accordance with the principle of old-for-new, regardless of brand). Electro thrown in the trash or abandoned in nature, pose a threat to the environment and human health.



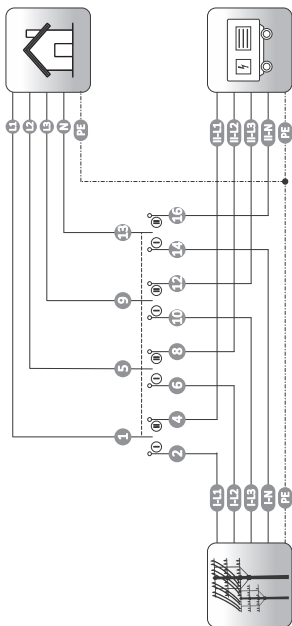
## Purpose

The PSA-440 is a 4-track modular mains-aggregate installation switch designed for electrical installations. It allows manual switching of the power supply between the mains and the generator, or complete circuit disconnection – this is achieved with the 1-0-2 switching programme. It is mounted on a standard DIN rail and allows easy management of energy sources in switchboards, both in domestic and public installations. It is possible to carry out switching up to the rated load current.

## Features

- » The main contacts (L1, L2, L3, N) are switched on/off simultaneously;
- » Mechanical protection prevents the simultaneous switching on of both power sources or the immediate switching of one line to the other without passing through the 0 position.

## Wiring diagram



## Technical data

number of tracks	4P
rated voltage	230/400 V AC
rated frequency	50÷60 Hz
rated current (AC-21B/AC-22A)	40 A
switching program	1-0-2
electrical strength	25.000 cycles
mechanical strength	100.000 cycles
terminal	10 mm <sup>2</sup> screw terminals (cord) 16 mm <sup>2</sup> screw terminals (wire)
tightening torque	2 Nm
working temperature	-20÷50°C
dimensions	4 modules (70 mm)
mounting	for TH-35 rail
ingress protection	IP20

## Warranty

F&F products are covered by a 24-month warranty from the date of purchase. The warranty is only valid with proof of purchase. Contact your dealer or contact us directly.

## CE declaration

F&F Filipowski L.P. declares that the device is in conformity with the essential requirements of The Low Voltage Directive (LVD) 2014/35/EU, the Electromagnetic Compatibility (EMC) Directive 2014/30/UE and the RoHS II 2011/65/UE + RoHS III 2015/863. The CE Declaration of Conformity, along with the references to the standards in relation to which conformity is declared, can be found [www.fif.com.pl](http://www.fif.com.pl) on the product subpage.

## General safety conditions

- » The switch should be installed and operated by qualified personnel.
- » Do not install a switch that is damaged or incomplete.
- » Ensure that all wires are connected correctly before applying voltage.