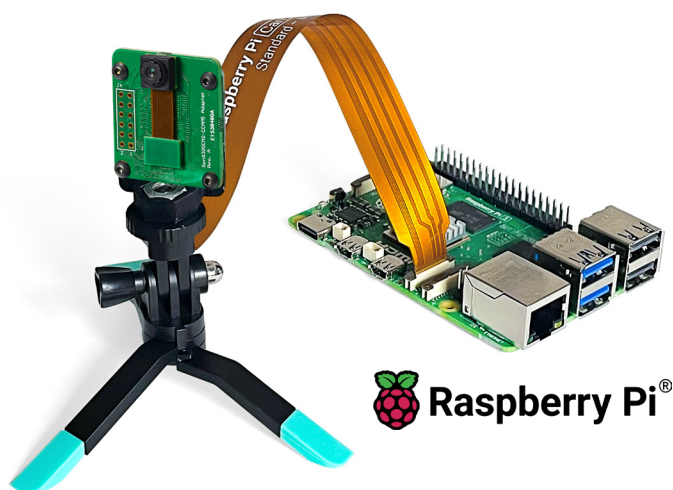


HIGH-PERFORMANCE EVENT-BASED VISION STARTER KIT FOR RASPBERRY Pi 5



STARTER KIT GENX320 FOR RASPBERRY Pi 5



* Raspberry Pi 5 board needs to be purchased separately.

SENSOR	
Sensor	Prophesee GENX320
Resolution	320 x 320 px
Event Rate	~10,000 fps equivalent
Latency	<150 μ s at 1,000 lux
Dynamic Range	>140 dB
Power Consumption	<50 mW (sensor only)
Interface	MIPI CSI-2 (D-PHY)

CAMERA	
Lens Mount	M6
Focal Length	1.11mm
Diagonal field of view	104°
Horizontal field of view	84°
Vertical field of view	84°
Aperture	f/2.4
IR Filter	No

FEATURES

- M6 Mount, FOV 104° lens
- Complete event-based camera board with lens
- 20 cm flex cable MIPI Raspberry Pi compatible output
- 3D-printed camera module cover
- Raspberry Pi 5: sold separately at: [raspberrypi.com](https://www.raspberrypi.com)

SOFTWARE

- V4L2 Driver
- Open EB: C++/ Python APIs
<https://github.com/prophesee-ai/openeb>
- Data recording, replay and visualization
- Sensor settings (biases), ROI, ERC

COMPATIBILITY WITH METAVISION® SDK5 PRO COMING SOON (OPTION AVAILABLE FOR PURCHASE)

Source code access including:

- Real-time object tracking
- Vibration detection
- Optical flow
- Active marker detection and tracking

Learn more: prophesee.ai/SDK5Pro

PROPHESSEE STARTER KIT - GENX320 - M6 MOUNT - RASPBERRY Pi 5

APPLICATIONS

This kit enables untethered, high-speed, low-latency event data collection on embedded platforms, serving as the foundation for developing advanced event-based applications:

DRONES:

- Detection and tracking
- Obstacle avoidance
- Real-time SLAM
- GPS-denied navigation

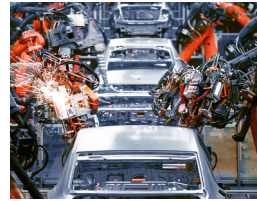
INDUSTRIAL & IoT:

- Vibration monitoring
- Spatter tracking
- High speed defect detection

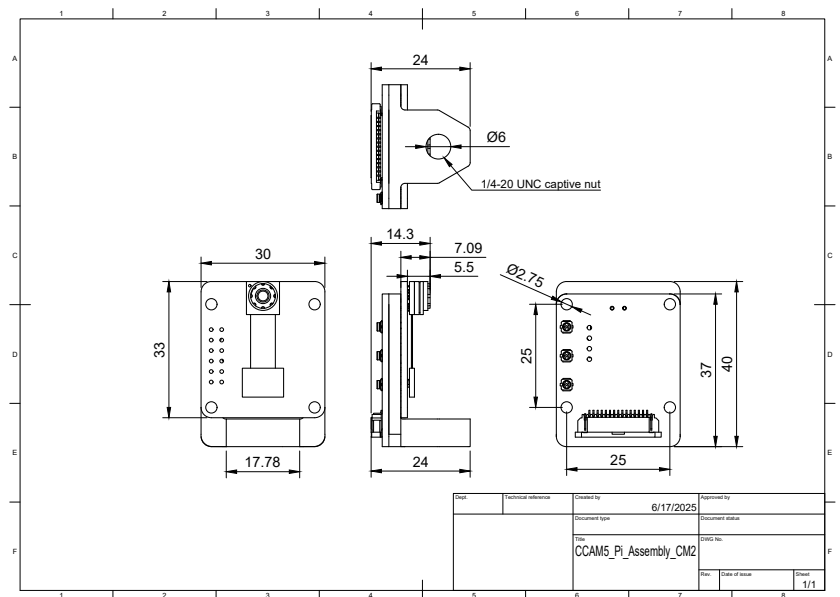
SURVEILLANCE:

- Fall Detection
- Intrusion Monitoring

...and many others.



PHYSICAL SPECIFICATIONS



DESCRIPTION

The STARTER KIT GENX320 for Raspberry Pi 5 is a compact and powerful embedded vision development platform designed to unleash the capabilities of event-based sensing on the Raspberry Pi 5. Built around Prophesee's GENX320, the world's smallest and most power-efficient event-based vision sensor, this kit enables the development of real-time, ultra-low latency applications for robotics, drones, industrial automation, and more. It provides a streamlined path to rapidly develop, test, and prototype custom applications, making it an ideal solution for engineers and researchers looking to harness the benefits of neuromorphic vision.

RASPBERRY Pi 5: HOST PLATFORM REQUIREMENT

Recommended accessories for best performance:

RASPBERRY Pi 5 8GB/16GB - SC1432/SC1113: <https://www.raspberrypi.com/products/raspberry-pi-5>

ACTIVE COOLER - SC1148: <https://www.raspberrypi.com/products/active-cooler/>

27W POWER SUPPLY - SC1153: <https://www.raspberrypi.com/products/27w-power-supply/>

SSD KIT - SC1675: <https://www.raspberrypi.com/products/ssd-kit/>

ORDERING CODES

PSKX320MPCM2RPI5 - STARTER KIT - GENX320MP-CM2 RPI 5

<https://www.prophesee.ai/event-based-starter-kit-genx320-raspberry-pi-5/>

IMPORTANT NOTICE – END-USER SPECIFIC TERMS AND CONDITIONS

PLEASE READ CAREFULLY:

By purchasing or using this Product, you (the “End User”) acknowledge and agree that your use or operation of the Product is governed by the **Specific Terms and Conditions of Sale applicable to Starter Kit GENX320 for Raspberry Pi 5 purchased online through authorized distributors** (the “T&Cs”), which are available at <https://www.prophesee.ai/specific-tcs-of-sale-applicable-to-starter-kit-genx320-for-raspberry-pi-5/>

These T&Cs include essential provisions regarding permitted use, intellectual property, restrictions, warranty limitations, and liability exclusions that apply to all End Users of the Products supplied through authorized distributors or resellers.

No contractual relationship of sale exists between the End User and Prophesee, except for the rights expressly set forth in the T&Cs. Any sale, payment, or delivery is made solely through the authorized distributor or reseller.

By using the Product, you agree to be bound by these T&Cs.